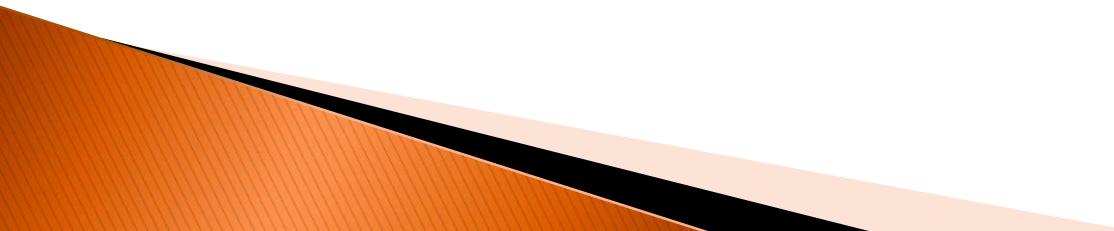


Following the TRAIL: Gift-Cultures and Collaborative Efforts for the Library Community

Maliaca Oxnam, University of Arizona
Marie Waltz, Center for Research Libraries
Joni Blake, Greater Western Library Alliance

Overview

- ▶ TRAIL – Technical Report Archive & Image Library
 - ▶ Culture status models and gift cultures
 - ▶ Gift Cultures & the TRAIL model
 - ▶ The role GWLA and CRL are playing
 - ▶ Further Thoughts
- 

What is TRAIL?

Technical Report Archive & Image Library

- ▶ Digitizing & preserving early federally funded technical reports
- ▶ Collaborative effort of more than 17 institutions
- ▶ Multi-year funding infrastructure from 33 institutions
- ▶ Shared vision and recognized need

Timeline

2003-2005:

- Starts with a local project at University of Arizona-
- Discussion at ASEE Annual conference; grassroots efforts began (June 2004)

2006:

- GWLA Strategic Initiative approved (April 2006)
- Taskforce appointed; first meeting (August 2006)

2007:

- Completed pilot project (March 2007)
- Explored potential partnerships and continued environmental scanning (September 2007)

2008:

- Pilot deemed successful; funding renewed
- Pursuing partnerships (University Michigan & Stanford)

Contributing Institutions

Content , Staff and Financial Support

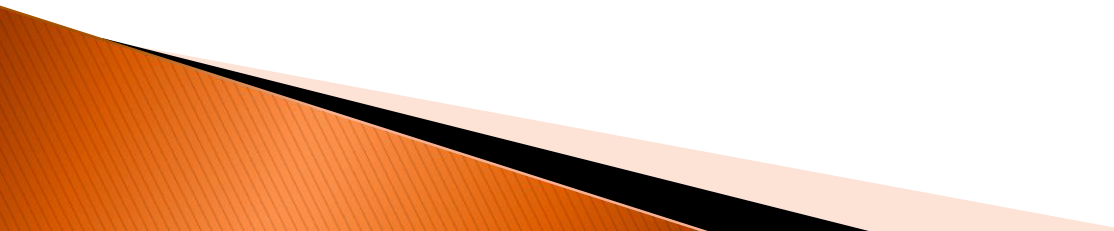
- ▶ University of Arizona
- ▶ University of Washington
- ▶ University of Hawaii-Manoa
- ▶ University of Arkansas
- ▶ University of Colorado-Boulder
- ▶ University of Utah
- ▶ University of Michigan
- ▶ University of New Mexico
- ▶ Rice University
- ▶ Baylor University
- ▶ Colorado State University
- ▶ Cornell University
- ▶ Kansas State University
- ▶ Linda Hall Library
- ▶ Oklahoma State University
- ▶ Stanford University
- ▶ Center for Research Libraries

Contributors Currently Providing Financial Support:

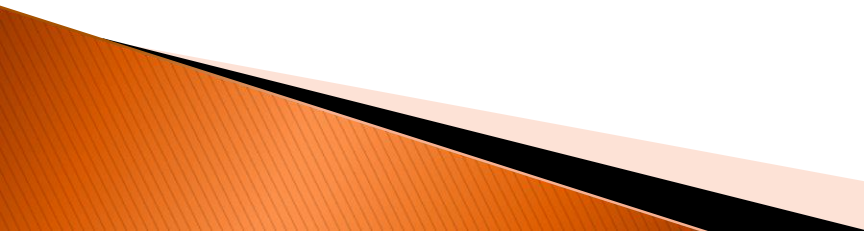
- ▶ Arizona State University
- ▶ Brigham Young University
- ▶ Colorado State University
- ▶ Iowa State University
- ▶ Oregon State University
- ▶ Southern Illinois University
- ▶ Texas A&M University
- ▶ Texas Tech University
- ▶ University of Hong Kong
- ▶ University of Houston
- ▶ University of Kansas
- ▶ University of Missouri - Columbia
- ▶ University of Nebraska – Lincoln
- ▶ University of Oklahoma
- ▶ University of Oregon
- ▶ University of Southern California
- ▶ University of Texas at Austin
- ▶ Utah State University
- ▶ Washington State University
- ▶ Washington University, St. Louis

Charge

Develop a collaborative project with the Center for Research Libraries to identify, digitize, archive, and provide persistent and unrestricted access to federal technical reports issued prior to 1975.



Collaboration vs Cooperation

- ▶ **Cooperation** – 1) to act or/work with another or others to common end : operate jointly; 3) to associate with another or others for mutual economic benefit
 - ▶ **Collaboration** – to work jointly with one or a limited number of others in a project involving composition or research to be jointly accredited
- 

“If you have an apple and I have an apple and we exchange those apples, then you and I will still each have one apple. But if you have an idea and I have an idea and we exchange these ideas, then each of us will have two ideas.”

– George Bernard Shaw

Cultural Status Models

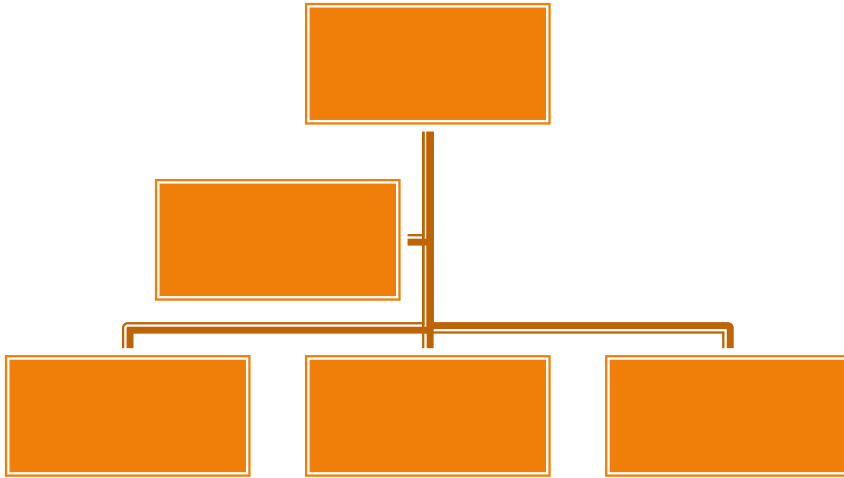
- ▶ *command hierarchy* – scarce goods allocated by one central entity and backed up by force
- ▶ *exchange economy* – goods allocated in a decentralized way through trade and voluntary cooperation
- ▶ *gift-culture* - status is determined not by what you control but by what you give away

– by Eric Raymond in *Homesteading the Noosphere*

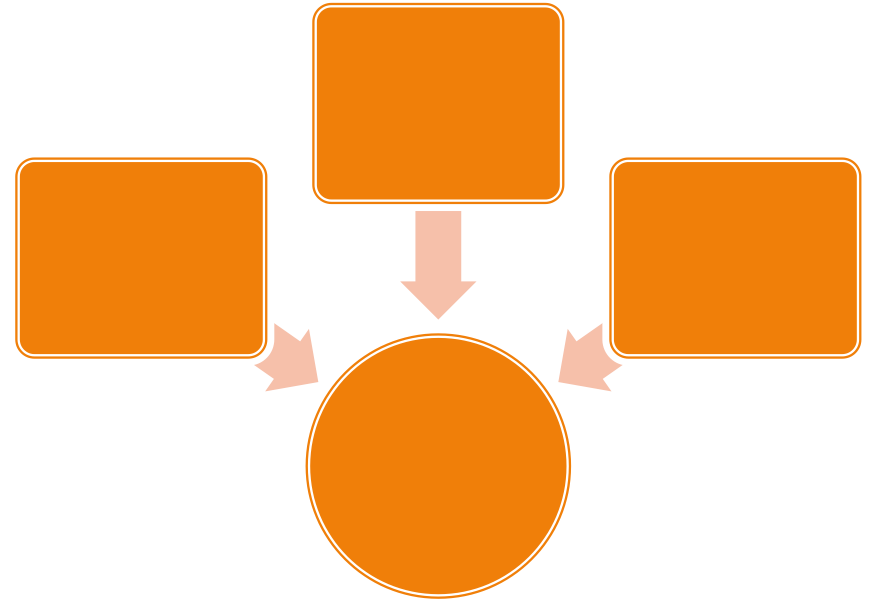
“Gift cultures are adaptations not to scarcity but to abundance.”

– by Eric Raymond in Homesteading the Noosphere



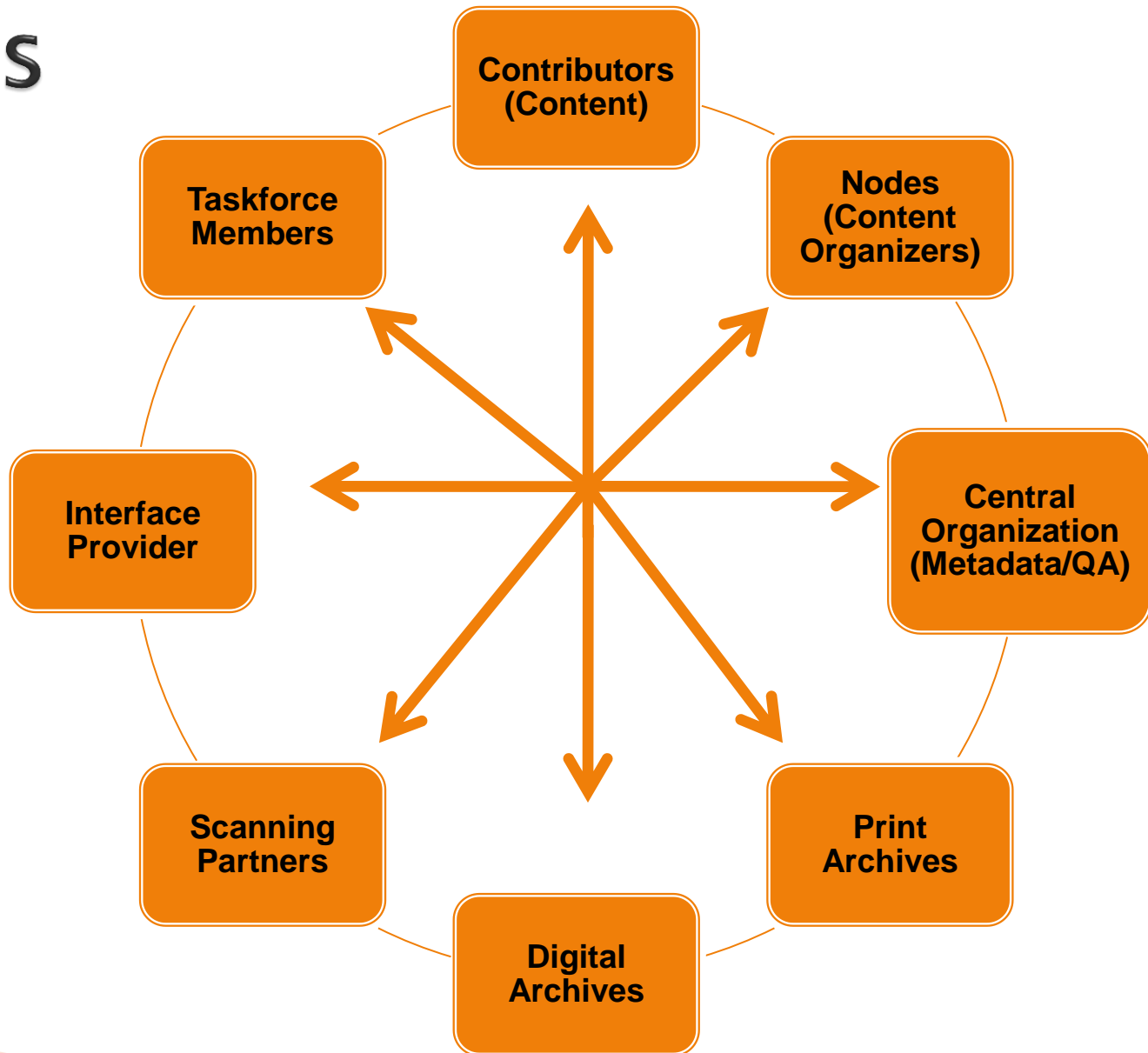


Hierarchy



Gift culture

Roles



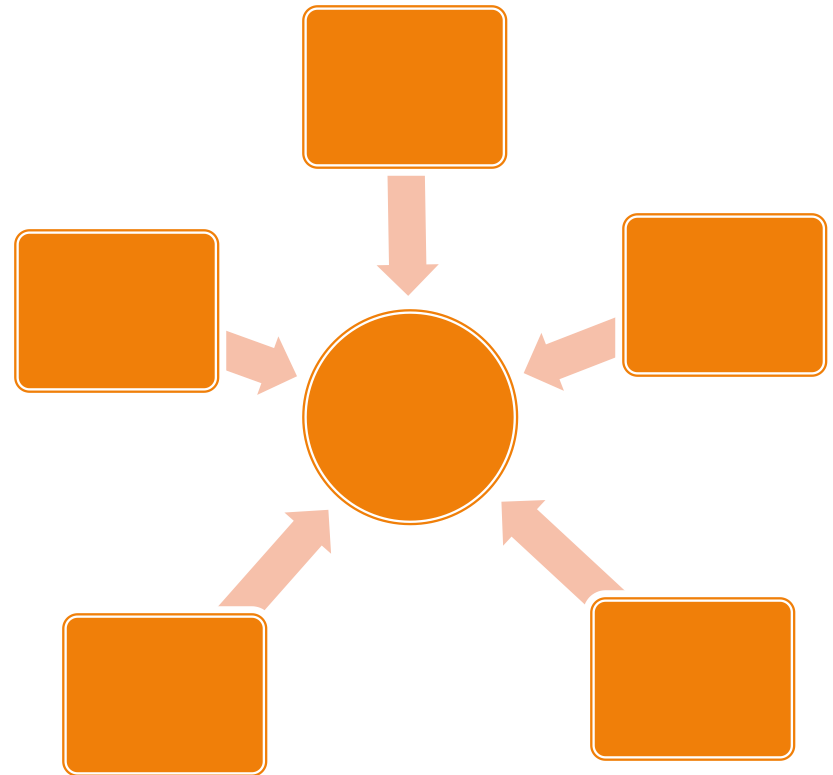
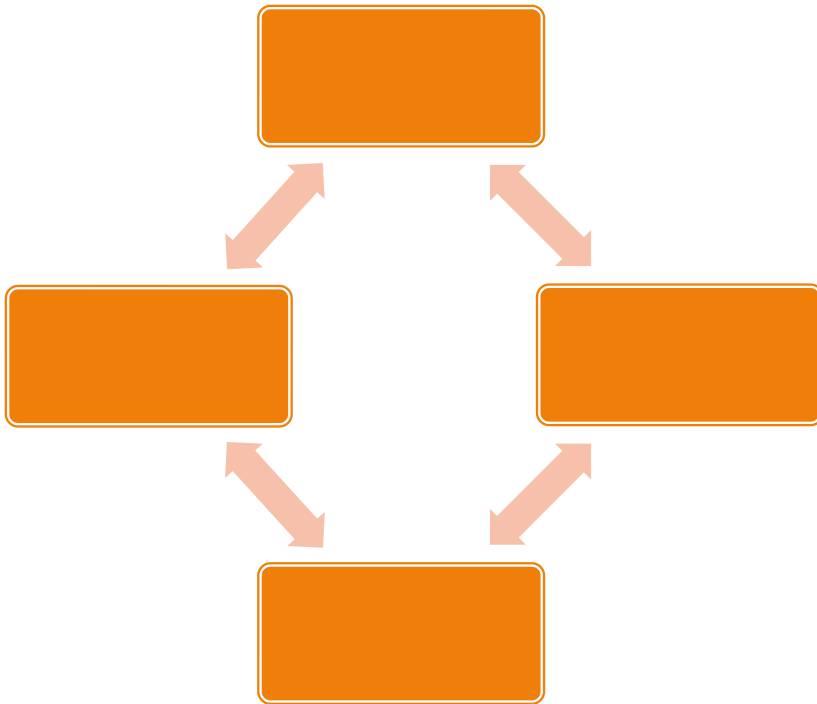
Libraries are changing

- ▶ Gift-cultures are one way to maximize our resources and expertise/specializations for the good of the community.
- ▶ Can be achieved regardless of the number of participants, geographic location, collection scope, or member assets

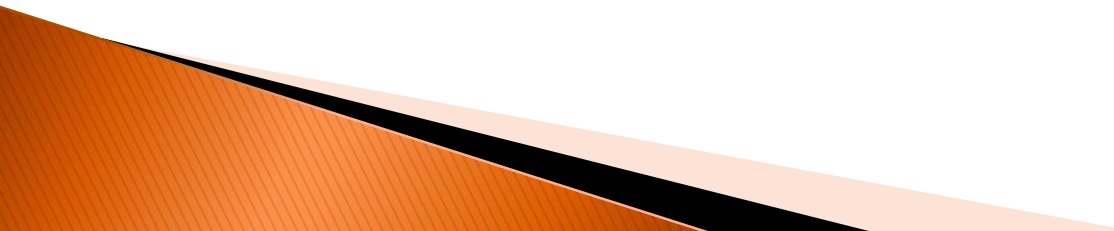
GWLA's Organizational Activity

Originally Based on Exchange Economy

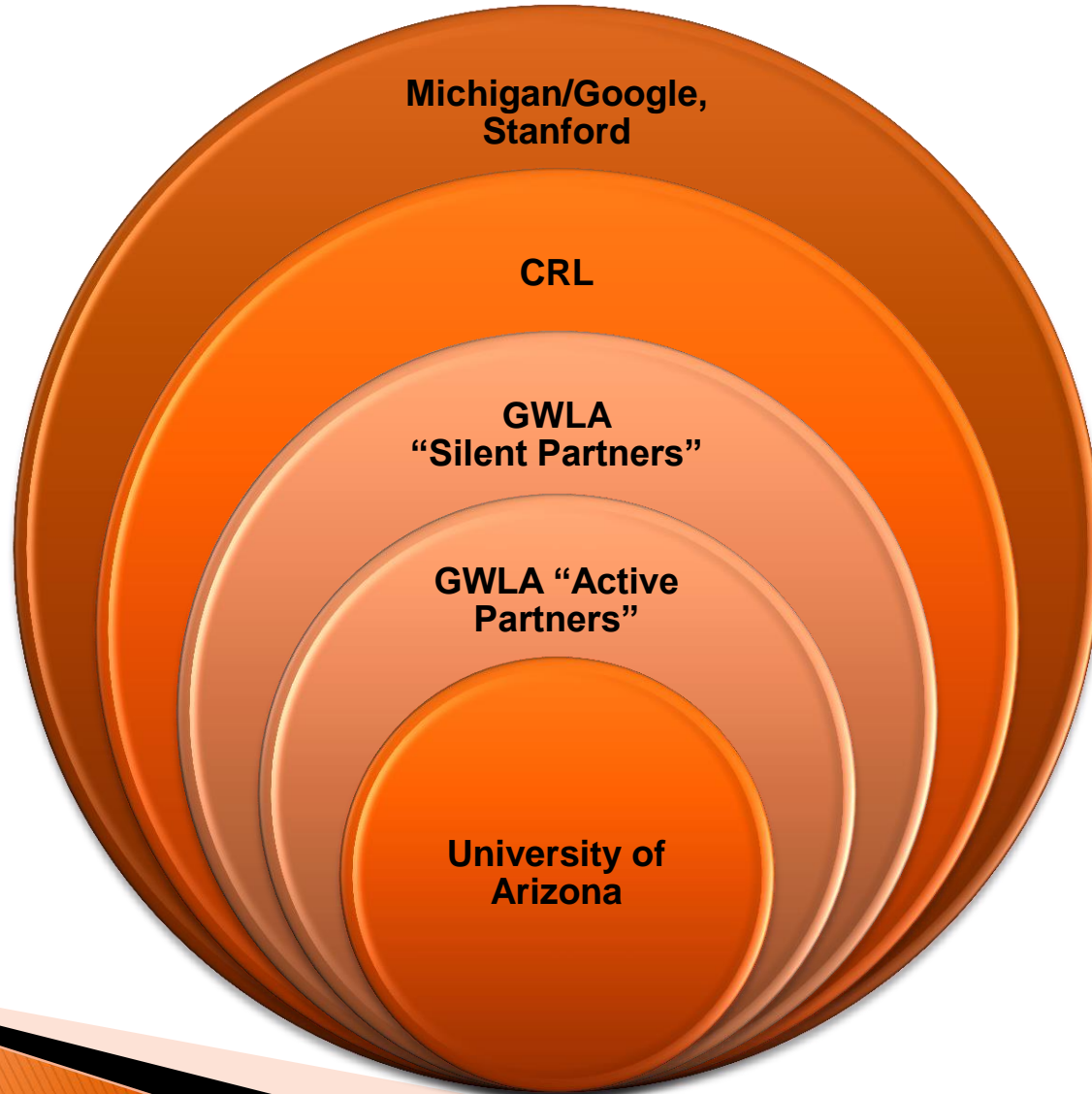
More Recent Projects are Gift-Based



GWLA's role & Institutional participation

- ▶ Taskforce structure/commitments
 - ▶ Conduit for members
 - ▶ Central Overhead
 - ▶ Fiscal management
 - ▶ Legal body for MOUs/contracts
- 

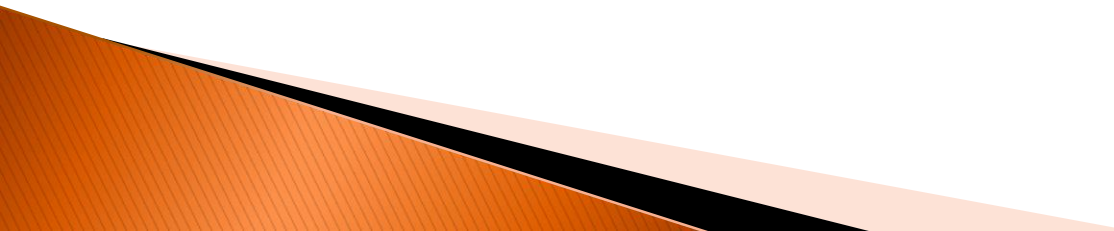
Fitting It All Together



CRL members are a community of Interest

- ▶ CRL's 245 members from universities, colleges and independent research libraries
 - ▶ CRL institutions represent a community of interest for this project, librarians and scholars who will use the technical reports.
 - ▶ CRL institutions can also become contributors to the TRAIL Project.
- 

CRL's role

- ▶ We can be a conduit for additional contributors
 - ▶ We are a contact to other institutions, such as ARL
 - ▶ We are giving additional fiscal management
 - ▶ We will assure good practices in digital preservation
- 

How do gift cultures form?

Vision

- Start discussing the ideas
- Develop a shared vision

Impact

- Share knowledge base
- Obtain institutional support
- Timing will vary by institution

Intimacy

- Focus on developing trust
- Maximize use of social network
- Consistent communication and reflection

Questions?

TRAIL Pilot website:

<http://digicoll.manoa.hawaii.edu/techreports/>

Maliaca Oxnam

oxnamm@u.library.arizona.edu

Marie Waltz

waltz@crl.edu

Joni Blake

joni@gwla.org