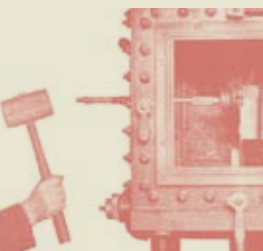




*The Center  
for Research  
Libraries*

**Continuity**  
**Annual Report Fiscal Year 2010**  
*(July 1, 2009–June 30, 2010)*



**The Center for Research Libraries (CRL)** is a consortium of North American universities, colleges, and independent research libraries. The consortium acquires and preserves newspapers, journals, documents, archives, and other traditional and digital resources for research and teaching and makes them available to member institutions through interlibrary loan and electronic delivery.

### **MISSION**

The Center for Research Libraries' mission is to support advanced research and teaching in the humanities, sciences, and social sciences by ensuring the survival and availability of the knowledge resources vital to those activities. CRL accomplishes this mission through cooperative action with its member libraries and partners.

Images on front cover from CRL collections unless otherwise indicated. From left to right: April 1985 issue of *grassroots* covering the funeral of victims of the Uitenhage massacre in South Africa; "Equipment for testing safety devices of electric miner's lamp in explosive mixture of gas and air." From U.S. Department of Commerce *Bureau of Mines Bulletin 131: Approved Electrical Lamps for Miners* by H. H. Clark and L. C. Isley (Washington, D.C.: U.S. Government Printing Office, 1917). From TRAIL collections; Cover page advertising in the May 14, 1920 issue of the *Nigerian Pioneer*; Cover of *Environmental Contamination from Weapon Tests* report (New York: Health and Safety Laboratory, United States Atomic Energy Commission, 1958). From TRAIL collections; From the 2010 Primary Source Award for Teaching project: Diary entry by Marjorie Pickthall Fonds. Courtesy of Special Collections, Victoria University Library (Toronto); From *Wells, Meres, and Pools: Hydronymic Terms in the Anglo-Saxon Landscape* by Mattias Jacobsson. (Uppsala University Library, 1997); Distinctive masthead of the *Central African Times* (March 7, 1908, Blantyre, Nyasaland); Image of National Bureau of Standards (NBS) Electronic Automatic Computer by the National Institute of Standards and Technology, 1950. From TRAIL collections.

## Message from the Chair



WITH THIS MESSAGE, I APPROACH THE CONCLUSION OF my second and final year as Chair of the Center for Research Libraries Board of Directors. The opportunity to work alongside my colleagues in service to the principles of CRL and in support of scholarly research has been one of the highlights of my time in librarianship. Likewise, it has been my privilege to work with President Bernie Reilly and his dedicated and innovative staff as they have advanced our research goals in the midst of the most challenging economic times since our inception in 1949.

Our theme of this year's annual report is "continuity." By that purposeful choice of words, our President has underscored the commitment of our organization to advance two key aspects of our mutual research agenda: the continuing acquisition and maintenance of the print resources that represent the "long tail" of scholarly research, and the ongoing effort to secure persistent access to digital resources that represent an ever-increasing proportion of our information universe.

This year, CRL has partnered with the Law Library Microform Consortium (LLMC) to enable access to millions of pages of primary legal publications from Canada, Europe, the United States, and other regions around the world. CRL and LLMC will continue to work together to ensure access and preserve for future scholars "at risk" primary resources in law and government. CRL continues to respond to the needs of researchers at its member institutions, and during the reporting year, digitized and delivered to our scholars more than 6,700 volumes required for their research projects.

Our ongoing attention to the long tail of scholarly research continued as member libraries weighed in on the tools most needed to advance the initiatives of member scholars. In the reporting year, CRL added more than one million dollars of new materials recommended by membership. In paper and in microform, the new resources ranged from Arabic

manuscripts, opposition pamphlets and other resources from Iraq, and missionary society archival materials, to newspapers from countries including China, India, Russia, Germany, and the United States.

Staff worked closely with the British Library to provide open Internet access to theses and dissertations from the United Kingdom on areas of primary interest, including the Middle East, the Persian Gulf, North Africa, Islam, and other subjects. As I write this message today, the pivotal developments in Egypt and elsewhere in Africa make the decision to acquire those resources seem particularly prescient.

Our efforts on behalf of the research community continue to earn the recognitions of granting agencies across the U.S. During the fiscal year, the Andrew W. Mellon Foundation, the National Science Foundation, and the Institute of Museum and Library Services each provided significant funding in support of the CRL's research agenda.

On other fronts, CRL's leadership continues to explore the potentials of Internet collaborations to advance the membership agenda. CRL forums and webinars on topics such as global water policy, African studies, law and government, print archiving, electronic theses, and even "the future of collection development" further advanced the sharing of collections information and expertise.

The leadership of Bernie Reilly and the dedication of his staff on our behalf allow all of us to realize that in these demanding times, close collaboration is required to advance the research agenda of our universities. We were delighted to be able to welcome six new members who recognized that imperative and joined us at the beginning of the fiscal year: Arkansas State University, the University of Central Florida, Middlebury College, the University of Northern British Columbia, Utah State University, and Williams College.

On behalf of your Board of Directors, I want to thank Bernie Reilly and staff for their support of the members' research agenda. We remain confident of our mission and our direction. Thank you for the opportunity to serve you in this capacity for the past two years.



Dr. Fred Heath  
*Chair, CRL Board of Directors (elected April 2009)*  
*Vice Provost, University of Texas at Austin*

*Our ongoing  
attention to the long  
tail of scholarly  
research continued  
as member libraries  
weighed in on the  
tools most needed  
to advance the  
initiatives of member  
scholars.*

## Message from the President



THE KEY NOTE FOR CRL'S ANNUAL REPORT FOR FISCAL year 2010 is **Continuity**. Over the past six decades, the organization has marshaled the formidable human and financial resources of the research libraries community to preserve critical materials for advanced research and teaching. For years the Area Microform Projects (pp. 17–18) and Global Resources Network projects (pp. 16–17) have enlisted the most knowledgeable area and subject specialists from major U.S. and Canadian universities to help build collections and collection-related resources in their fields. These efforts have resulted in an enormous collection of newspapers, government documents, archives, journals, and books—many of them unique—that will always be available to researchers.

Today we face the paradox that continuity requires change: to ensure **the same** scholarly access to news, archives, and other primary evidence in an age of digital media, CRL must provide a **new** set of services and activities.

This year expertise and support from many CRL libraries enabled CRL, in partnership with Readex, to expand the scope of the World Newspaper Archive (p. 7) to encompass newspapers from Africa and South Asia.

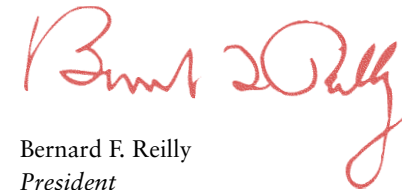
This year CRL webinars on resources for East Asian, African, and Southeast Asian studies (p. 11) gathered library specialists in acquisitions, collection management, reference, and resource sharing to discuss CRL holdings and critical related materials elsewhere. A series of teleconferences provided a confidential venue where representatives of CRL libraries pooled information and expertise to evaluate major new commercial databases and devise strategies for dealing with commercial aggregators.

CRL's January 2010 report on Portico (pp. 9–10) was the product of extended consultation and deliberations by members of the Certification Advisory Panel. The report provides detailed information on both the benefits and limitations of a major e-journal archive. This kind of

information supports due diligence by libraries investing in Portico, and informed decision-making by prospective investors.

CRL's ability to devise new ways to support informed collection development in a rapidly changing environment owes much to the Andrew W. Mellon Foundation. Both funding and strategic guidance from the Foundation have been essential to planning and implementing new CRL activities in a time of scarce resources.

For the continuity of CRL's work, and the survival of critical evidence for research and teaching, thanks are due to the enlightened library directors, collections specialists, reference staff, and others at CRL libraries, who once again this year generously offered their time, expertise, and resources.



Bernard F. Reilly  
*President*

## Contents

<b>Mission Statement</b> . . . . .	1
<b>Message from the Chair</b> . . . . .	2
<b>Message from the President</b> . . . . .	4
<b>FY2010 Annual Report Narrative</b> . . . . .	6
<b>Board of Directors, Officers, Committees, and Staff</b> . . . . .	19
<b>Member Institutions for Fiscal Year 2010</b> . . . . .	22
<b>Independent Auditor's Report</b> . . . . .	F1
<b>Statements of Financial Position (June 30, 2010 and 2009)</b> . . . . .	F2
<b>Statements of Activities</b> . . . . .	F3
<b>Statements of Cash Flows</b> . . . . .	F4
<b>Notes to Financial Statements</b> . . . . .	F5
<b>Supplementary Information</b> . . . . .	F15
Schedule of Functional Expenses and Collections Expenditures . . . . .	F16
Schedule of Program Revenue and Expenses—Grants . . . . .	F17

*In fiscal year 2010 (July 1, 2009–June 30, 2010), CRL focused on continuity of service to its constituents, maintaining the excellent service libraries have traditionally valued from CRL by acquiring and making available unique and unusual materials needed by faculty, students, and other researchers. At the same time, CRL continued to reshape its operations and services to implement the strategic priorities identified by its board and management in 2008. This work is supported by a 2009 grant of \$1.45 million from the Andrew W. Mellon Foundation.*

## ACHIEVING NEW STRATEGIC PRIORITIES

**Objective I. Expanding electronic access to critical source materials, particularly news, archives, journals, and dissertations and theses for the CRL community.**

### Digital Production at CRL

Between July 1, 2009, and June 30, 2010, CRL scanned in-house a total of 654,248 pages from CRL collections. Digital delivery, or converting materials in response to patron requests for interlibrary loans, made up nearly 60 percent of all in-house scanning in FY10. CRL supplied scanned documents instead of loaning the source material a total of 2,348 times, to 179 member libraries.

CRL's in-house digital production reached two important milestones in October 2010: conversion of over two million pages and 10,000 titles in support of research and instruction interests at CRL libraries. With the growing body of material, digital collections continue to increase in use by member institutions. In this fiscal year, 11,734 items were accessed by member institutions, a 25-percent increase over usage in 2009. This represents a small but growing percentage of CRL's overall usage activity (approximately 15 percent of all use of CRL content).

CRL scans items in response to scholars' requests for loan

of materials if the scope will allow turnaround in five days or less. Items scanned for patrons are linked from catalog records and remain available for users to download in PDF format. This increases patron access and preserves materials in CRL's collection by scanning rather than lending.

Planned or strategic scanning of titles recommended by CRL affinity groups makes up the other component of in-house digital production. In FY10, items selected for strategic digitization included:

- 19th- and early 20th-century books on conduct-of-life themes (such as how-to manuals and etiquette books), identified by CRL's **Undergraduate Research Working Group**;
- Select microfilmed records of German field commands from World War II;
- Early publications of the Fabian Society, instrumental in developing the democratic socialist platform of the British Labour Party;
- The full run of *Soera moehammadijah* (1921–41), a significant publication from the formative years of Indonesia's modernist Muslim movement; and
- Selections (1885–87) from the *Bible Society Record*, a publication of the American Bible Society that served to connect its members at home and abroad.

CRL also began scanning microfiche copies of its unique collection of newsletters from the Civilian Conservation Corps (1933–42), a work relief program under Franklin D. Roosevelt's New Deal. At the end of the year, CRL had scanned nearly 200 titles of these newsletters, filled with colorful anecdotes, stories, and camp news from thousands of companies deployed across the country.

The **Undergraduate Research Working Group** (formerly the Liberal Arts Interest Group) continues to identify primary source material for CRL digitization to support upper-level undergraduate coursework and instruction. As mentioned above, URWG has identified a list of etiquette

and conduct-of-life books not included in other digital collections. To date, approximately 50 percent of these materials have been scanned. These works can be found by searching CRL's catalog under the "Digital" tab using the subject "conduct of life."

The group is also examining material in members' special collections related to Native American/First Tribes. Among the first material selected for digitization is content from one of the first of the "Oberlin Band" of evangelical missionaries to work among the Ojibwa (Chippewa) tribe in Minnesota. Work is expected to be completed in FY11.

## Collaborative Digitization

### *World Newspaper Archive*

In FY09, CRL started a collaborative news digitization venture—the World Newspaper Archive (WNA)—with Readex, a division of NewsBank, Inc. The first module containing **Latin American Newspapers** was released in December 2008. By the end of the fiscal year, more than 1.1 million pages had been digitized, representing over 145,000 issues and 33 titles, including *La Prensa* (Argentina), *El Peruano* (Peru), *Star and Herald* (Panama), and *El Universal* (Mexico).

Collections for the WNA are assembled from the microform holdings of CRL and partner libraries, ensuring comprehensive representation of many of the most significant world newspapers. Thanks to investment and contribution of content by a number of libraries, CRL was able to launch two new modules in FY10:

- **African Newspapers**, launched in November 2009, represents more than 40 titles from sub-Saharan Africa in a variety of languages. The collection will encompass more than 400,000 pages and features rich content from Ghana, Kenya, Liberia, Lesotho, Liberia, South Africa, Uganda, Zimbabwe, and other countries. This collection was highlighted in the summer issue of

*FOCUS on Global Resources* (Vol. 29, No. 4).

- **South Asian Newspapers**, released in June 2010 to members, features titles such as *Madras Mail* (New Delhi, India), *The Leader* (Allahabad, India), and *Ceylon Observer* (Sri Lanka). This module will contain more than 400,000 pages of newspapers published in South Asia between 1864 and 1922.

Thirty-eight charter participants have invested in the launch of this phase of the World Newspaper Archive, allowing CRL to continue to invest in the delivery and long-term persistence of the news content for the CRL community (see sidebar).

### *American Periodicals from the Center for Research Libraries*

Launched in June 2009, *American Periodicals from the Center for Research Libraries* is a set of important historical trade and popular periodicals held by CRL and digitized in collaboration with ProQuest. By the end of FY10, 70 percent of the projected 3 million pages had been delivered to ProQuest for processing, with nearly 1.4 million pages from over 185 titles currently available online for browsing and full-text searching. All issues are scanned in full color to capture the flavor of early color printing.

Examples of titles available include *The American Annual of Photography* (1887–1906), *The Manufacturer and Builder* (1869–97), *Pacific Medical & Surgical Journal* (1858–1917), and *American Railroad Journal* (1832–86). Patron inquiries on publications from particular trade sectors have helped expand the original selection list. Also, ProQuest has been able to confirm rights to release more than sixty related titles published after the public domain cutoff date of 1922 for digitization.

Providing electronic access will help protect the often-brittle originals from loss or harm. CRL is archiving the bound serial volumes, as well as working with ProQuest to ensure sustainability of the digital files. CRL provides digital interlibrary loan on a volume-by-volume basis for CRL

CRL thanks the charter participants for the World Newspaper Archive African and South Asian modules (2010):

University of Alabama  
University of Alberta  
Arizona State University  
University of British Columbia  
University of California, Berkeley  
University of California, Los Angeles  
University of California, San Diego  
University of Chicago  
Columbia University  
University of Connecticut  
Cornell University  
University of Delaware  
Duke University  
Emory University  
Georgia State University  
Harvard University  
University of Illinois at Urbana-Champaign  
Indiana University  
University of Iowa  
University of Kentucky  
Marquette University  
McMaster University  
Michigan State University  
University of Michigan  
University of Minnesota  
New York University  
University of North Carolina at Chapel Hill  
Northwestern University  
Ohio State University  
Oklahoma State University  
University of Oregon  
University of Pennsylvania  
Princeton University  
University of South Carolina  
Trent University  
Vassar College  
University of Washington  
Yale University



libraries that haven't purchased the APCRL digital collection. Also, CRL library discount pricing is available through ProQuest.

### *ETHOS (British Library's Electronic Theses Online Service)*

CRL sponsored the digitization of 400 British doctoral dissertations by EThOS (<http://ethos.bl.uk>) with subjects related to Islam, the Middle East, and a variety of topics of interest to CRL's community. This collaboration builds on the decades-long cooperation between CRL and the British Library in accessing dissertations through the Demand Purchase Program.

The recent introduction of EThOS' online service gave CRL the opportunity to prioritize frequently requested titles from CRL's collection for digitization. These titles were scanned by the EThOS program and are now available online to any registered patron, providing access for the thousands of graduate and postgraduate researchers in the CRL community.

CRL has extended its collaboration with EThOS to facilitate digitization of eligible U.K. dissertations for CRL members. CRL will place orders on behalf of a requesting institution for any dissertation from participating EThOS institutions, and will make payment for digitization as required. This year, CRL fulfilled 147 ILL requests through EThOS.

## **Access to Electronic Resources**

### *Negotiated Purchase Discounts for Digital Collections*

In response to increasing member requests for help with the purchase of electronic resources, CRL added four digital collections to the 2010 Purchase Proposal Program. Of the four, Gale's *Making of the Modern World* and *Mass Observation Online* from Adam Matthew drew enough interest to explore a group purchase. Working with the NorthEast Research Libraries consortium (NERL), CRL put forward an offer that resulted in favorable discounts on these products for its members. While the number of institutions able to ultimately purchase these large products was modest,

the member response to the effort was very favorable and will be continued in the next year. Members also expressed strong interest in the type of information CRL could gather and publish as background for making purchase decisions, including information on the extent of content coverage and basis for pricing.

**Objective 2. Support cooperation among library and consortia on the preservation and management of print and digital collections.**

## **Supporting Print Archives**

### *CRL National Print Archives Framework Program*

In July CRL convened representatives of more than a dozen U.S. and Canadian consortia and other library organizations on "The Role of Regional Consortia in a National Strategy for Legacy Print Collections." Attendees described their current archiving efforts and the challenges involved.

It was clear that a unifying strategy could make these efforts more effective and could multiply the return on the energy and resources invested at the local and regional levels. CRL agreed to outline a viable unifying strategy focusing on newspapers, journals, government documents, and other serial publications. The strategy would be designed to significantly reduce physical collection costs within the next three years. CRL also agreed to work with the appropriate organizations to plan and implement a unified approach.

In November, CRL appointed Lizanne Payne to lead this initiative. Ms. Payne was formerly Executive Director of the Washington Research Library Consortium (WRLC) and is the author of a well-regarded CLIR study on cooperative print archives.

Through a series of consultations with consortia and with CRL libraries, CRL identified ways to better support cooperative archiving at the regional and state levels. It became clear that little interest existed among CRL libraries

in centralized **prospective** print archiving of published scholarly journals. Promoting informed action and coordination among the various archiving efforts through greater sharing of information took precedence. In particular, information regarding:

- The scope and condition of archived holdings;
- Terms of service and conditions under which materials are archived by established and emerging cooperative efforts;
- Business and sustainability models identifying cost factors and cost-sharing principles, with estimated costs and benefits for participants of varying characteristics.

CRL developed a prototype searchable Print Archives Registry to illustrate how a web-accessible database of archived holdings might function: <http://www.crl.edu/archiving-preservation/print-archives/print-archive-registry-searchable>. Participating institutions and print archiving efforts in the database included:

- Five Colleges, Inc. (Mass.)
- Orbis-Cascade Alliance (Pacific Northwest)
- Pennsylvania Academic Library Consortium, Inc.
- Triangle Research Libraries Network (North Carolina)
- Portico (digital archive)
- CLOCKSS (digital archive).

The prototype database includes a narrative description of each project as well as specific characteristics, with a link to the host institution for more information. The data provided allows users to search titles by ISSN (to display archive locations and holdings for a given serial) or by the archiving institution (to show titles and holdings for those organizations).

The second and third phases of the initiative, to be carried out in FY 2011–13, will focus on further aggregation and sharing of information about the print-archiving initiatives.

### *JSTOR Print Archive and Catalog at CRL*

This year CRL added 11,000 new volumes and 223 new titles to the JSTOR collection. CRL currently has 46,200 volumes in 1,706 titles (the JSTOR digital archive contains 1,841 titles in its digital collection).

CRL also created a new catalog for easy access to its JSTOR print archive, available at <http://catalog.crl.edu/search~S37>. Users can determine what JSTOR print volumes are currently included in the print archive at CRL, and identify what volumes are needed to complete the CRL collection.

### **Assessment and Certification of Digital Repositories**

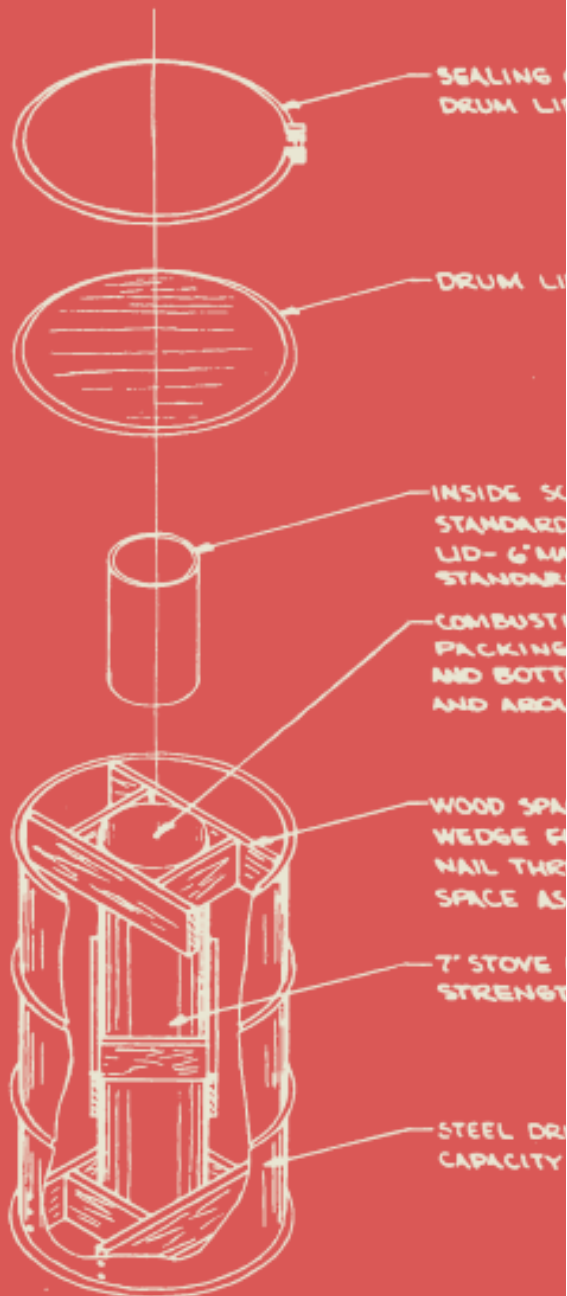
During 2010, CRL undertook formal, in-depth assessments of two repositories of interest to its community: Portico and the HathiTrust Shared Digital Repository. Through these evaluations, CRL aims to promote understanding of, and (where justified) confidence in, digital repositories. This will help CRL libraries realize the greatest possible return on their investments in electronic scholarly resources and digital preservation. To guide its auditing and assessment activities, CRL formed a Certification Advisory Panel—comprised of leaders in collection development, preservation, and information technology—to ensure that the certification process addresses the interests of the entire CRL community.

In December, the Certification Advisory Panel concluded its formal audit of the Portico digital repository. The panel, chaired by Martha Brogan of the University of Pennsylvania, concluded that the practices and services described in Portico public communications and published documentation are generally sound and appropriate to the content being archived and the needs of the CRL community.

The Certification Advisory Panel also identified a number of issues that Portico will need to address to more fully satisfy the concerns of CRL libraries, as described in the detailed

*To guide its auditing and assessment activities, CRL formed a Certification Advisory Panel . . . to ensure that the certification process addresses the interests of the entire CRL community.*

Diagram of a uranium scrap drum shipping container. From *Nuclear Safety in Manufacturing Plants* by James E. McLaughlin (New York: Health and Safety Laboratory, United States Atomic Energy Commission, 1959). From TRAIL collections.



audit findings. Portico has agreed to address those issues and to make certain disclosures to CRL periodically, as a condition of continued certification. The Portico certification report is available on CRL's website at: <http://www.crl.edu/archiving-preservation/digital-archives/certification-and-assessment-digital-repositories/portico>.

In 2010 the Certification Advisory Panel began an evaluation of the HathiTrust Shared Digital Repository (SDR), an emerging repository of digital content, much of which has been generated by mass digitization projects by Google, the Internet Archive, the University of California, and others. Preliminary information was shared with the members at CRL's annual council meeting in April, although the assessment was still ongoing.

#### *Human Rights Electronic Evidence Project*

With funds from the John D. and Catherine T. MacArthur Foundation, the CRL Global Resources Network continued its two-year project to assess the use of technology by human rights organizations to document human rights abuses.

CRL completed its survey and preliminary analysis of human rights organizations in the United States, conducting interviews with key organizations such as Amnesty International, Human Rights Watch, International Center for Transitional Justice, and WITNESS. In addition, project staff conducted detailed profiles of NGOs and human rights monitoring and activist groups in Mexico and Rwanda, focusing specifically on the technologies used by those groups. The regional assessments provide insight into the current state of electronic documentation in areas that suffer from poor information technology (IT) infrastructure and varying political and legal climates. The study will help inform efforts by CRL libraries and archives to preserve and protect born-digital evidence and documentation for long-term use.

#### *Other Digital Repository Assessment Activity*

CRL began work on audits of the New Zealand National

Library's National Digital Historic Archive (NDHA) and the San Diego Supercomputer's Chronopolis repository. CRL continues to work with the Ontario Consortium of University Libraries to assist the Scholars Portal repository to prepare for TRAC certification.

Work on the National Science Foundation-funded **Long-lived Digital Repositories** projects continued throughout the year, with periodic publication of profiles of the case study repositories. In January and February 2010, CRL conducted a series of **roundtables** supported by the National Science Foundation aimed at funding agency administrators and policymakers, program officers, and other appropriate agency staff. These sessions were intended to familiarize funding agencies with practices and strategies that contribute to the successful long-term maintenance of digital collections and archives.

**Objective 3. Providing reliable, in-depth information on the content, cost, and performance of critical print and electronic resources and archiving services.**

### **Informing Collection Development**

#### *Collection Development Workshops*

In conjunction with the American Libraries Association Annual Meeting in Chicago in July 2009, CRL conducted a collection-development and resource-sharing workshop on "**Primary Sources for the Humanities and Social Sciences.**" Attendees heard about recent and planned additions to the CRL shared print, film, and digital collections, and shared ideas for future cooperative collecting and services in the areas of newspapers, serials, foreign dissertations, and archives.

CRL also hosted two preconference collection-development workshops at the 2009 Charleston Conference. These sessions focused on "**Access to Academic Theses and Dissertations**" and "**News: Paper, Film, and Digital.**"

These sessions were repeated as CRL member webinars in February 2010.

CRL conducted webinars throughout the year to better inform CRL libraries of its collections and services. CRL conducted several general webinars that featured CRL's user services and "how-to" information for recently enrolled institutions and new staff at CRL libraries. In addition, CRL hosted several special topic webinars to highlight specific subject areas or programs of CRL. These included:

- China Resources (August 2009)
- The Future of Primary Sources (December 2009)
- Southeast Asia Primary Resources (January 2010).

The President's Report and presentations at the **61st Annual Council of Voting Members Meeting** highlighted CRL accomplishments and planned activities to expand the support for collection development. The afternoon **Collections Forum** offered administrators, staff, and faculty at CRL libraries the chance help shape CRL's agenda and services for the coming year. These online sessions featured a series of conversations on CRL's multiyear agenda to expand electronic access to critical research materials and support local collection decision-making and investment. Experts presented detailed information on CRL's certification and print archiving efforts, and obtained ideas and perspectives on digital and print preservation from attendees.

#### *Electronic Resource Assessment*

CRL continued its collaboration with *The Charleston Advisor (TCA)*, which publishes critical reviews of online resources for libraries. Collections specialists at CRL libraries identified databases for review in *TCA*. In 2010 this resulted in several articles of interest to the membership, including:

- An assessment of four digital collections of Latin American literature (written by Holly Ackerman at Duke University)

- A comparative evaluation of *The Making of the Modern World* and Google Books
- A report from CRL on Portico as a "Trustworthy Digital Repository"
- An assessment of the *American Periodicals from the Center for Research Libraries (APCRL)* module from ProQuest
- An article by Bernie Reilly on "Archiving Digital News: Challenges and a Report on Planning".

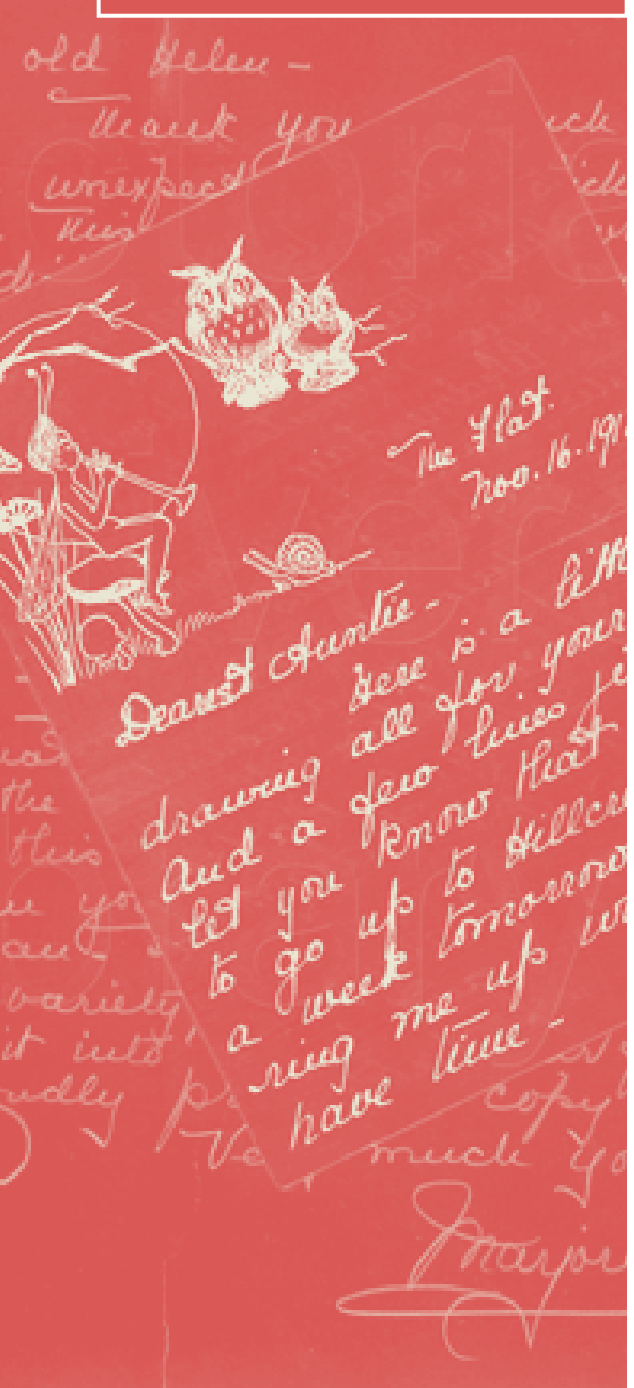
#### *Global Resources Forum*

In April 2010, CRL formally introduced its new initiative: the **Global Resources Collections Forum**, an integrated framework of information supporting timely decisions on collections investments by specialists at member libraries. The Forum will link and expand on several existing CRL initiatives—such as webinars and conferences, topic guides, and CRL's online newsletter *FOCUS on Global Resources*—and supplement these activities with a variety of new resources developed by and for the CRL community.

- **Critical assessments of individual collections and e-resources of interest to participating libraries.** Reviews—by staff and specialists from CRL institutions—will provide actionable information for members, and will focus on recent and emerging collections of high interest to the CRL community.
- **Independent assessments of major electronic publishers and aggregators, print and digital repositories, and other service providers** who manage and provide access to major source materials. This detailed information will provide support for collection-related investment decisions.
- **Surveys of essential research resources and collecting challenges in various domains.** These guides will expand upon information related to various research topics currently available on CRL's website.

**These published analyses will be augmented by live collection-related webinars, teleconferences, and other**

From the 2010 Primary Source Award for Teaching project: Diary entry by Marjorie Pickthall Fonds. Courtesy of Special Collections, Victoria University Library (Toronto).



**events.** Several of the components had begun implementation by the end of FY10, and more information will be available in the coming year.

### Primary Source Awards

CRL created the Primary Source Awards to recognize faculty, librarians and library staff, graduate students, and other researchers within the CRL community for innovative uses of primary source materials in three areas: research, teaching, and access. The inaugural annual competition began accepting nominations in fall 2009 and received eligible nominations from universities and colleges in nine states and two Canadian provinces.

The CRL Collections and Services Policy Committee selected the following projects to be recognized by these awards:

- 2010 Primary Source Award for Access  
**Dr. Elisabeth McMahon**—Assistant Professor of History, Tulane University  
Dr. McMahon engaged her students in a community partnership with the Amistad Research Center, introducing them to primary sources through hands-on indexing and inventorying.
- 2010 Primary Source Award for Research  
**Dr. G. R. Boynton**—Professor of Political Science, University of Iowa  
Dr. Boynton's project deploys eight computers in the Main Library at the University of Iowa to continually harvest from the web data on new media trends.
- 2010 Primary Source Award for Teaching  
**Dr. Anne Urbancic**—Senior Lecturer, Italian Studies at the University of Toronto, Victoria College  
Dr. Urbancic's course enabled students to explore historiography through traditional classroom pedagogy, experiential exercises, and the creative use of primary source materials.

The awardees were featured in CRL's spring issue of *FOCUS on Global Resources* (Vol. 29, No. 3).

### Communications and Infrastructure

To enhance support and service to its community, CRL launched a **newly designed website** in October 2009, powered by the Drupal content management system. CRL's revamped site makes it easier for users to find information about CRL collections and services. Shortly after the launch, CRL underwent a **usability study** that polled users about the site's updated features and helped further refine the new design.

CRL implemented a new electronic publication in January 2010 called **CRL Connect**. This regular update collects timely information on CRL events and activities, reports, webinars, collection additions and highlights, and collaborations. To sign up for *CRL Connect*, visit <http://www.crl.edu/connect>.

Through its ongoing program of general and subject-based **web presentations**, CRL is developing a deep knowledge base for its members. To support the ongoing discovery of resources, CRL began capturing many of its presentations via audio and **video recording**. Presentation slides and recordings are mounted and archived on CRL's website, enabling CRL to reach hundreds of additional participants for these events. For example, CRL posted the video presentations from the **61st Annual Council of Voting Members Meeting**, featuring both the presentations at the Business Meeting and the afternoon Collections Forum. In addition to the 130 institutions that participated in the live meeting, the presentations were accessed more than 350 additional times since the event.

### COLLECTIONS AND ACCESS PROGRAMS

#### Purchase Proposal Program

CRL purchased ten microform sets of rare materials, international archives, and gender and cultural studies collections, identified by CRL libraries, for a list price value of \$172,674.

- *Arabic Manuscripts in the British Library—Hadith Kalam*
- *Bild Zeitung (Hamburg)*, June 1960–Dec 1998
- *Church Missionary Society Archive. Section VII: General Secretary's Papers*
  - *Part 1: Papers relating to Africa 1847–1950*
  - *Part 2: Papers relating to Africa 1873–1949*
- *Fukkoku manga shirizu*. – (123 volumes 漫画 (*manga*) reprints)
- *Imperial Russia's Illustrated Press*
- *Indian Public Opinion and Panjab Times*, 1870–77
- *Muslims in Russia 1881–1918*
- *The Sacramento Bee*, May 1939–49
- 时事新报 / *Shi shi Xin Bao (The China Times [Shanghai])*, 1908–49.

More detail on these purchases can be found at: <http://www.crl.edu/sites/default/files/attachments/pages/pp10purchases.pdf>

## Shared Purchase Program

CRL also arranges for collaborative purchases as needs arise, and develops proposals based on high-interest titles identified under the Purchase Proposal Program. In the Shared Purchase Program, CRL and the nominating library provide seed money for the purchase, and member libraries pledge additional funds to acquire the resource, which is then available for lease to all CRL libraries.

In FY10 through the Shared Purchase Program, CRL added the following titles to its collection, representing a total list price of more than \$36,000:

- *Comintern Archives: Files of the Communist Party of Japan*  
The files of the Communist Party of Japan (CPJ) cover the period 1919–41 and include extensive

documentation on the relations between the Soviet Communist Party and its counterparts in Japan, the Far East, Europe, and America.

- *Islam-Fiche: Readings from Islamic Primary Sources (Series I–II)*  
More than 200 reading texts (in English translation) chosen from published and unpublished sources to reflect the chronological, geographical, and linguistic diversity of Islamic studies.
- *Nihon shokuminchi kyoiku seisaku shiryō shusei: Chosenben Collection of Japanese Colonial Documents on Education Policy: Korea*  
This collection contains documents relating to education policy in Korea during the colonial period 1910–45.
- *Women in the Netherlands East Indies. Part 2: 1912–1960*  
Correspondence, reports, and other documentation concerning the founding and administration of Dutch-language secondary schools for girls in Java supported by the Kartini Fund.

## Scholars' Access Program

The Scholars' Access Program is a pilot initiative to provide access for researchers to material that may not necessarily be added to CRL's physical collection. In 2010, nine scholars took advantage of this program. Examples of use of funds include: arranging for limited-term access to a database for which the researcher's home institution might not subscribe; purchasing content for scholars that is not ordinarily sold to libraries; and acquiring short runs of newspapers to fill research needs that normally would not fit under other programs at CRL.

CRL thanks the following libraries for contributing to this year's Shared Purchase Program:

University of Arizona

University of British Columbia

University of California, Berkeley

University of California, Los Angeles

Colby College

University of Colorado, Boulder

Columbia University

Cornell University

Duke University

University of Iowa

McGill University

Oregon State University

University of Oregon

University of Pennsylvania

Princeton University

Purdue University

University of Washington

Wayne State University

## Support for Access to CRL Collections

### Metadata and Cataloging Statistics

July 2009–June 2010

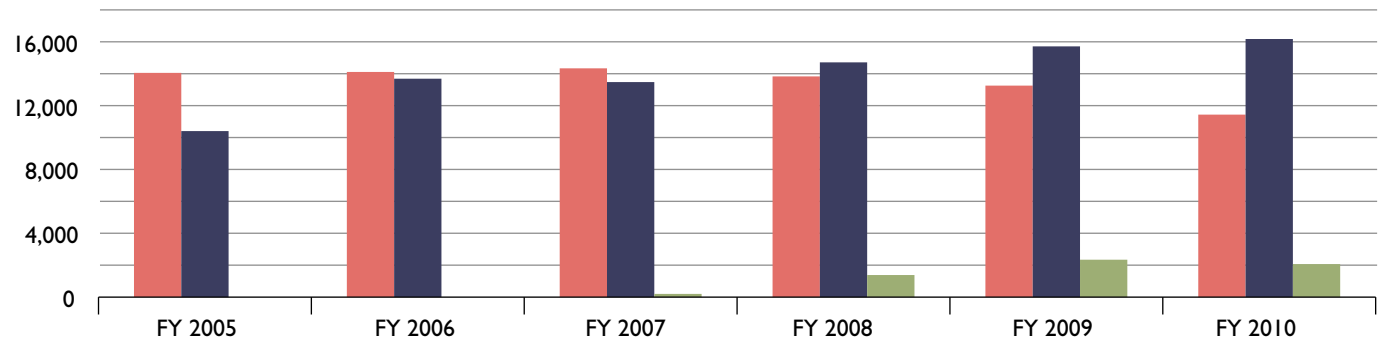
Metadata added to records for items digitized	4,197	
Dissertations	1,763	
CRL monographs	3,388	(1,038 Area Studies)
CRL serials	3,857	(77 Area Studies)
CRL newspapers	268	(97 Area Studies)
Total Cataloged	9,276	(1,286 Area Studies)

### Access Statistics

Total filled requests	46,222
Requests filled by loan	11,441
Items sent by loan	67,102
Requests filled digitally	2,070
Digital Pages scanned	436,394
Document Delivery Requests filled	16,182
Downloads of Digital Titles in FY10	16,663 (41% increase)

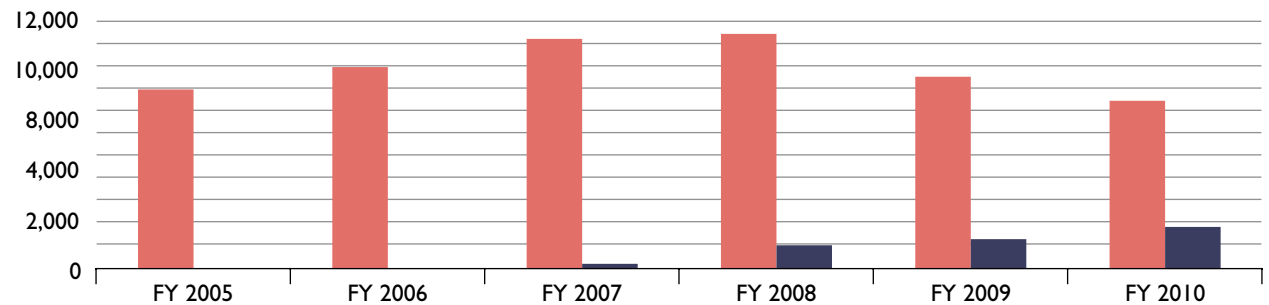
### Requests Filled, FY 2005–10

- Filled by Loan
- Non-Returnables
- Requests Filled Digitally



### Items Supplied, FY 2005–10

- Items Sent on Loan
- Digital Items Downloaded (DDS)



CRL completed cataloging the backlog of monographs on microfiche acquired through the LC Cooperative Acquisition Program (previously PL480). CRL continues to catalog serials from this program.

#### *Interlibrary Loan and Article Document Delivery*

In FY10, the total number of requests was 46,222, representing a 6-percent decline from the previous year but still slightly higher than the five-year average of total requests. Requests for non-returnables (articles) were up 3 percent from the previous year, reflecting the third straight year of increases. Patron-initiated circulation requests increased approximately 18 percent across the multiple systems (OhioLINK, Summit, Rapid, Prospector, ArticleReach, and Connect NY). CRL maintained a 64-percent fill rate for requests.

## INTERNATIONAL PROGRAMS

### **Global Resources Network**

The Global Resources Network (GRN) continued its collaborative approach to supporting international studies through the preservation and exchange of knowledge and source materials. In 2010, the GRN lent considerable support to CRL's broad strategic objectives, contributing content and expertise to events, reviews, and activities described elsewhere in this report. In addition, several activities advanced the objectives of the GRN, including the hosting of a summit of Global Resource and Area Microform project heads and the incorporation of a new program focused on federal-level technical reports.

#### *GRN Summit: Fair Dealing and Sustainable Management of Archives and Cultural Evidence*

In June 2010, CRL hosted a summit meeting for the chairs of the GRN and Area Microform Projects. This forum sought to focus expertise on the challenges of cooperation with libraries and archives in "source communities." Area studies and policy research in the global north depend

heavily upon access to manuscripts, newspapers, and other types of documentation from the various world regions. Few institutions in those regions benefit, however, from the programs of preservation and access conducted for scholars in the U.S., Canada, and Western Europe. The full-day session focused on some of the challenges and political implications of north-south collaboration and explored models and approaches that could help surmount these challenges.

#### *Technical Report Archive and Image Library*


The Technical Report Archive and Image Library project identifies, digitizes, preserves, and provides persistent and unrestricted access to U.S. federal technical reports in engineering, nuclear science, health and safety, and other scientific and technical fields. The project focuses on legacy collections produced and distributed prior to 1975.

In 2009, CRL and the Greater Western Library Alliance (GWLA) began exploring the transition of TRAIL from GWLA to the Global Resources Network. While GWLA was instrumental in founding and supporting the project, TRAIL had expanded sufficiently to seek opportunities to extend its network to an international constituency.

To date, more than 1.9-million pages of public-domain technical reports have been scanned, including materials from the U.S. Atomic Energy Commission, National Bureau of Standards, U.S. Bureau of Mines, and other agencies. TRAIL also plays a critical role in ensuring permanence for these legacy resources, both through enhanced cataloging and shared management of physical collections (print archives).

CRL invites members to participate in the TRAIL project through the Global Resources Network program. More information on TRAIL, the proposed participation model, and information on how to join can be found on CRL's website: <http://www.crl.edu/grn/trail>.





Cover of *Musical Instruments of the Lower Indus Valley of Sind* by N. A. Baloch (Hyderabad Sind, Pakistan: Sind University Press, 1975). CRL e-Resource.

## Digital South Asia Library

Under its current grant from the Department of Education, the Digital South Asia Library (DSAL) continues to produce large quantities of records for the South Asia Union Catalogue (SAUC), a comprehensive historical bibliographic database of publications from the subcontinent. To date, SAUC contains more than 600,000 records and adds new records at a rate of 2,000–4,000 per month. SAUC records are freely available through <http://sauc.uchicago.edu/>.

In addition, DSAL neared finalization of the **Gramophone Recordings from the Linguistic Survey of India**, consisting of digitized recordings originally collected in South Asia from 1913 to 1929. Intended as a supplement to Sir George A. Grierson's *Linguistic Survey of India* published between 1904 and 1927, the recordings of stories, songs, and poems were collected by provincial governments of British-ruled India in cooperation with Grierson and the Gramophone Company, Calcutta. The recordings will be accessible at <http://dsal.uchicago.edu/lsi/>.

DSAL is a recipient of a major award from the U.S. Department of Education's TICFIA program. The University of Chicago will partner with CRL, the British Library, and other institutions to create digital versions of historical audio recordings, maps, and images of South Asia and deliver them through DSAL. The grant builds on the foundation and experience of DSAL's previous digital initiatives, contributing further to scholarship with three specific services:

- recovery and delivery of early audio recordings in the languages of South Asia;
- creation and presentation of digital cartographic resources and geographic information system data for the entirety of South Asia; and
- conversion and digital access to important photographic images of the subcontinent.

## Global Resources Network Projects

The Global Resources Network projects continue to extend the abilities of CRL libraries to identify, access, and preserve valuable scholarly material.

- The **Collaborative Initiative for French Language Collections (CIFNAL)** continues to offer electronic databases to members, including *CAIRN*, a collection of French and Belgian journals. *CAIRN* offers 256 journals in the Humanities and Social Sciences, from economics, politics, public affairs, sociology, education, psychology, philosophy, history, geography, and additional areas of study. CIFNAL also concluded a licensing agreement for *Electronic Enlightenment* (Oxford University Press), a wide body of primary source content from 18th-century Europe, enhanced through additional scholarly content and interpretation.
- The **German North-American Resources Partnership (GNARP)** now has a membership of 50 institutions, including several key partners in Germany. GNARP pursues collection-development activities (including subscription to electronic resources such as the *Bibliographie der deutschen Sprach- und Literaturwissenschaft*) and actively promotes professional exchange between librarians from Germany and North America.
- The **Human Rights Archives and Documentation Program (HRADP)** convened a videoconference among several institutions with large grant-funded initiatives to collect human-rights material. The meeting offered opportunities to share information and best practices for each program and to explore means of collaboration among the projects. The University of Texas at Austin was instrumental in providing space and the technical support for this event.
- The **International Coalition on Newspapers (ICON)** debuted a periodic digest of news relating to

newspaper digitization and preservation efforts. This activity ties in closely with CRL's Global Resources Forum. ICON also continues to explore technical solutions to harvest metadata from large-scale digital news databases, including proprietary commercial sources.

- The **Latin Americanist Research Resources Project (LARRP)** recently continued to engage members in its Distributed Resources program, in which institutions allocate specific funds to acquire specialized research material in different regions and subjects of Latin America. Collected materials include monographs, serials, films and documentaries, ephemera, and special collections.
- The **Digital Library for International Research (DLIR)** posted a digital inventory for Furniture and Decorative Arts of Sri Lanka. It includes a searchable image database of approximately 1,000 images with descriptive metadata from 11 museums and historic sites, including the National Museums of Sri Lanka, the Lunuganga Trust, tea estates, and private collections. The DLIR received a new four-year grant from the U.S. Department of Education's TICFIA program to digitize manuscripts in Palestine and Yemen, archival collections in Tunisia, pamphlets relating to Guatemala (at Princeton University), and maps in Israel, Algeria, and Egypt.
- The **Technical Report Archive & Image Library (TRAIL)** collaborative effort recently transferred from GWLA to the Global Resources Network and invites participation of CRL members in its activities (see above).

### Area Microform Projects

CRL continues its ongoing commitment to long-term preservation of primary resources through the Area Microform Projects (AMPs). These programs promote preservation and accessibility of unique, scarce, or endangered research material, and work with international

institutions to preserve their collections in both traditional and electronic formats. Highlights of accomplishments in FY10 include:

- The **Cooperative Africana Microform Project (CAMP)** committed significant funding to preserve contemporary newspapers collected by the Library of Congress field office in Nairobi. CAMP recently microfilmed 22 titles published in Tanzania between 1991 and 2007, 166 short-run newspapers from Congo, and 13 titles from Mauritius (1984–2009). CAMP also acquired 58 reels of the *Daily Dispatch* (East London, South Africa) 1967–76, a critical resource for the study of Steve Biko and the Black Consciousness Movement.
- **LAMP** received 17 reels of microfilm of a collection of 19th-century women's journals from Brazil, filmed from the collection of the Arquivo do Estado de São Paulo and Biblioteca Nacional (Brazil). The collection features such titles as *Novo Correio de Modas* (1852–54), *O Sexo Feminino* (1873–89), and *A Mai de Família* (Jan 1879–Dec 1888). LAMP also supported the creation of access copies of several Latin American serials preserved by the Nettie Lee Benson Latin American collection at the University of Texas at Austin. Titles include *La Semana* (1946–61) from Colombia and *Revista de economía Argentina* (1919–52).
- The **Middle East Microform Project (MEMP)** completed microfilming of 2001–08 issues of *al-Nur* (Damascus, Syria), the newspaper organ of the Faysal group of the communist party of Syria. MEMP continues to preserve significant ephemeral material from the Library of Congress Arabic Pamphlet Collection. Topics covered include the Arab-Israeli conflict, Egypt, human rights, Islam, Lebanon, and others.
- The **South Asia Microform Project (SAMP)** acquired 57 reels of microform of the historic *Times of Ceylon*

Tổng-Lập : TRẦN-THIỆN-QU

Toàn-quyền quier đả n Hanoi

xét ở Hà-tỉnh v độ là 00k 71 Inchi

PASQUIER

hôm nay Giorgi ra trước tòa Đại-bình để trả tội giết người hôm 6 Novembre

Ngày 6 tháng 11 năm 1931, tòa Đại-bình ở Paris đã mở phiên tòa xét xử Giorgi...



Giorgi

DONG CA KHOA HUC GIOT O TOAN-LAU

IV (Tập thơ) - NHUNG DEU THONG THAY KHU BAY LEN CAO 10 000 THUCOC - NHUNG SU NGUY BIEM TRONG LUC DUNG BAY BI

Best Auguste Piccard người định bụng cao-lên, mũi xương, trán rộng, cặp con mắt tinh anh mà vui vẻ, có miệng nở một kính vàng. Chúng ta hãy nghe người nói chuyện về cuộc đi-tích trên trời của người: - « Năm ai đây này, cuộc thí nghiệm của chúng tôi đã có kết-qua. Song phải chờ mà chờ tiếp-hoại (la saupeur) nó đúng hừ, thì cái kết-qua lại còn viên mãn hơn nữa. »



Ông Piccard với máy bay của ông, trước tòa Đại-bình để trả tội giết người hôm 6 Novembre

Đến nỗi thành-liệu tại chúng tôi nghe có tiếng vô-vấn, rồi lại nghe tiếng dướng-khi (oxygene) đương thoát ra ngoài; lúc nào đương-khi lại ra khỏi cái chỏm nó bị nhốt trong, thì nó có anh ra một cái tiếng đê-ô-ti-âm-ô-ô (un sifflement caractéristique). May sao sự tình có lại khiến cho tôi có đem theo một mớ bột-gòn với vaseline (vaselin), cho làm lấy 20-30 mà nhét cái lỗ đó kín lại. Thật là phương pháp thì không có mớ bột-gòn với vaseline, thì hôm nay tôi đâu còn nói chuyện với các ngài! Thế u để cho đương-khi lại ra ngoài hết, thì nhưm điện-rừng chúng tôi phải chờ-khỏi ở trong trái cầu bằng nhôm!

- (1863-1907), as well as the Sind Gazette (1910-14), published in Karachi, (now) Pakistan. The Southeast Asia Microform Project (SEAM) completed a cooperative venture with the National Library of Vietnam (NLV), supported by the Henry Luce Foundation, to preserve important colonial-era newspapers, journals, and monographs uniquely held by the NLV. SEAM also selected for microfilming a significant collection of Vietnamese newspaper titles in Chinese script covering 1922-76. The Slavic and East European Microform Project (SEEMP) completed production of 81 reels of microfilm of the Oslobođenje (Sarajevo, Bosnia, and Hercegovina) from 1999 to 2008. This key title from the former Yugoslavia is being used in conjunction with the war crimes trial of former Bosnian Serb leader Radovan Karadzic. SEEMP also completed filming of a set of rare Cossack newspapers published during World War II.

## Board of Directors, FY2010

*Elected April 2008*

**Fred Heath, Chair**

University of Texas at Austin

**Edward S. Macias, Vice Chair**

Washington University in St. Louis

**Brian E. C. Schottlaender, Secretary**

University of California, San Diego

**Sarah Michalak, Treasurer**

University of North Carolina at Chapel Hill

**Alice Prochaska, Immediate Past Chair**

Yale University

**Nancy Allen**

University of Denver

**Paul Courant**

University of Michigan

**Charles Henry**

Council on Library and Information Resources

**Peter Lange**

Duke University

**Earl Lewis**

Emory University

**James Mullins**

Purdue University

**Joyce L. Ogburn**

University of Utah

**Charles Phelps**

University of Rochester

**Leslie Weir**

University of Ottawa

**Bernard F. Reilly, ex officio**

Center for Research Libraries

**Yvonne Jefferson, staff liaison**

Center for Research Libraries

**Raymond Sallay, staff liaison**

Center for Research Libraries

## Executive Committee

**Fred Heath, Chair**

University of Texas at Austin

**Edward S. Macias**

Washington University in St. Louis

**Sarah Michalak**

University of North Carolina at Chapel Hill

**Alice Prochaska**

Yale University

**Brian E. C. Schottlaender**

University of California, San Diego

**Bernard F. Reilly, ex officio**

Center for Research Libraries

### **Budget & Finance Committee**

**Sarah Michalak, Chair**  
University of North Carolina at Chapel Hill

**Karyle Butcher**  
Oregon State University

**James A. Cogswell**  
University of Missouri-Columbia

**Rick Schwieterman**  
OCLC, Inc.

**Bernard F. Reilly, *ex officio***  
Center for Research Libraries

### **Collections and Services Policy Committee**

**Joyce L. Ogburn, Chair**  
University of Utah

**Winston Atkins**  
Duke University

**Sharon Farb**  
University of California, Los Angeles

**Richard Fyffe**  
Grinnell College

**Scott Mackenzie**  
Simon Fraser University

**Jeanne Richardson**  
Arizona State University

**Bryan Skib**  
University of Michigan

**Michael Stoller**  
New York University

**Dan Hazen, *ex officio***  
Harvard University

**Bernard F. Reilly, *ex officio***  
Center for Research Libraries

### **Membership Committee**

**Brian E. C. Schottlaender, Chair**  
University of California, San Diego

**Nancy Allen**  
University of Denver

**Lou Pitschmann**  
University of Alabama

**Sarah Pritchard**  
Northwestern University

**Carton Rogers**  
University of Pennsylvania

**Vicki Williamson**  
University of Saskatchewan

**Bernard F. Reilly, *ex officio***  
Center for Research Libraries

### **Nominating Committee**

**Fred Heath, Chair**  
University of Texas–Austin

**Barbara Dewey**  
University of Tennessee

**Kenneth Frazier**  
University of Wisconsin-Madison

**Paula Kaufman**  
University of Illinois at Urbana-Champaign

**Charles Phelps**  
University of Rochester

**Bernard F. Reilly, *ex officio***  
Center for Research Libraries

## Global Resources Committee

Peter Lange, Chair  
Duke University

Barbara McFadden Allen  
Committee on Institutional Cooperation

John Buschman  
Georgetown University

Dan Hazen  
Harvard University

Paula Kaufman  
University of Illinois at Urbana-Champaign

Eudora Loh  
University of California, Los Angeles

James Neal  
Columbia University

Louis Pitschmann  
University of Alabama

James Simon, *ex officio*  
Center for Research Libraries

## Human Resources & Compensation Committee

Sherrie Schmidt, Chair  
Arizona State University

Carolyn Henderson Allen  
University of Arkansas

Mary Case  
University of Illinois at Chicago

Sheila Johnson  
Oklahoma State University

Bernard F. Reilly, *ex officio*  
Center for Research Libraries

## CRL Executive and Managerial Staff

Bernard F. Reilly  
President

Yvonne Jefferson  
Assistant to the President

Raymond Sallay  
Controller

Melissa Trevvett  
Vice President and Director of Programs and Services

James Simon  
Director of International Resources,  
and Director, Global Resources Network

Mary Wilke  
Member Liaison and Outreach Services Director

Amy Wood  
Director of Technical Services

Patricia Xia  
Director of Information Systems

Kevin Wilks  
Head, Access Services

Patricia Finney  
Head, Stack Management

Virginia Kerr  
Digital Program Manager

Don Dyer  
Membership and Communications Coordinator

## Member Institutions for Fiscal Year 2010

### Voting Members

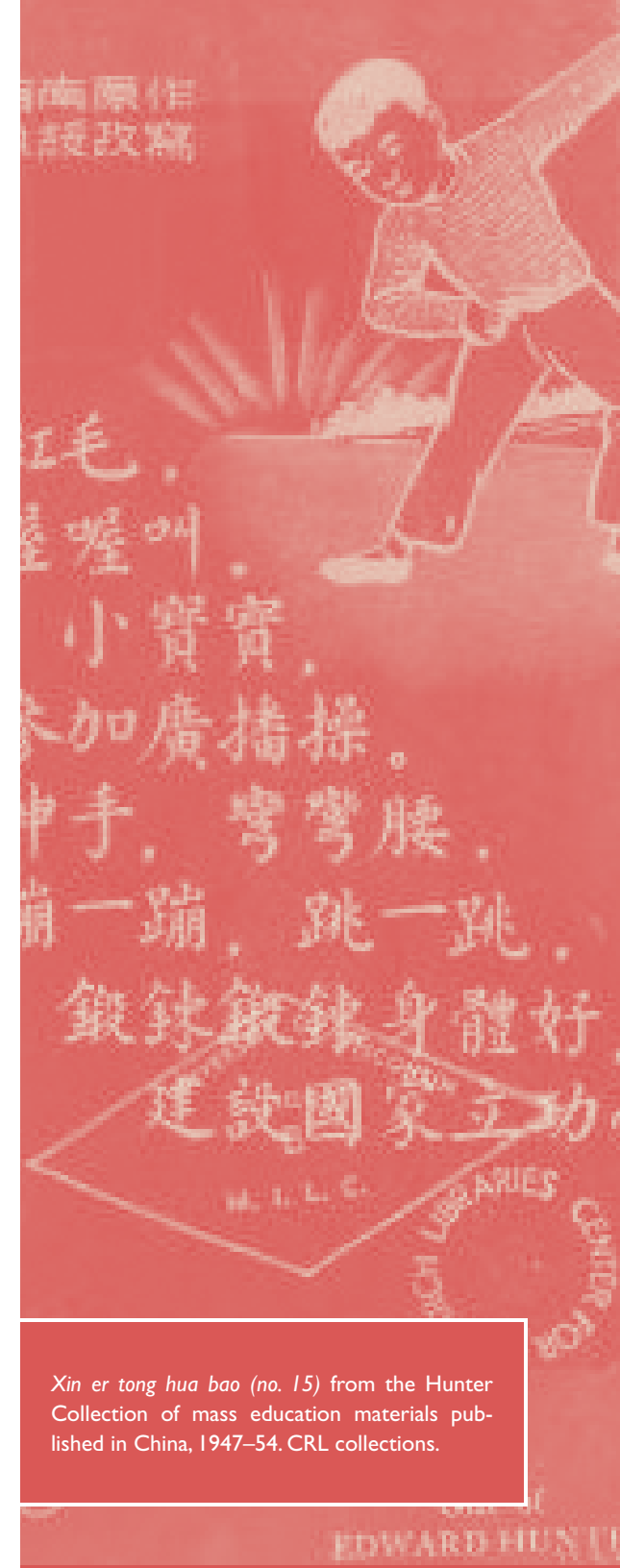
Adler School of Professional  
Psychology  
University of Akron  
University of Alabama  
University of Alaska-Fairbanks  
University of Alberta  
Arizona State University  
University of Arizona  
University of Arkansas  
Athabasca University  
Benedictine University  
Binghamton University  
Bowling Green State University  
Brigham Young University  
University of British Columbia  
Brock University  
University of Calgary  
University of California, Berkeley  
University of California, Davis  
University of California, Irvine  
University of California, Los Angeles  
University of California, Riverside  
University of California, San Diego  
University of California, Santa Barbara  
University of California, Santa Cruz  
Canisius College  
Carleton College  
Carleton University  
Carnegie Mellon University  
Case Western Reserve University  
Chicago State University  
University of Chicago  
University of Cincinnati  
Claremont Colleges  
Clemson University  
Colby College  
Colgate University  
College of William & Mary  
Colorado College  
University of Colorado  
Columbia University  
University of Connecticut  
Cornell University  
Dartmouth College  
University of Dayton  
University of Delaware  
DePaul University  
University of Denver  
Duke University  
Emory University  
Federal Reserve Bank of St. Louis  
Field Museum  
Florida Atlantic University  
Florida International University  
Florida State University  
University of Florida  
George Mason University  
Georgia State University  
University of Georgia  
Grambling State University  
Grinnell College  
Harvard University  
Hope College  
University of Houston  
Illinois College  
Illinois Wesleyan University  
University of Illinois at Chicago  
University of Illinois at Urbana-  
Champaign  
Indiana University  
Iowa State University  
University of Iowa  
Johns Hopkins – Nitze School of  
Advanced International Studies  
Kansas State University  
University of Kansas  
Kent State University  
University of Kentucky  
Knox College  
Lake Forest College  
Lakehead University  
Le Moyne College  
Loyola Marymount University  
Loyola University Chicago  
University of Manitoba  
Marquette University  
University of Massachusetts, Amherst  
McGill University  
McMaster University  
Miami University-Ohio  
Michigan State University  
University of Michigan  
Millikin University  
University of Minnesota-Twin Cities  
University of Mississippi  
University of Missouri-Columbia  
University of Missouri-Kansas City  
University of Moncton  
Monmouth College  
University of Montreal  
National Humanities Center  
Newberry Library  
University of New Brunswick  
University of New Mexico  
New York Public Library  
New York University  
North Carolina State University  
University of North Carolina  
University of North Texas  
Northern Illinois University  
Northwestern University  
University of Notre Dame  
Ohio State University  
Ohio University

OhioLINK  
Oklahoma State University  
University of Oklahoma  
Ontario College of Art & Design  
Oregon State University  
University of Oregon  
University of Ottawa  
Pennsylvania State University  
University of Pennsylvania  
University of Pittsburgh  
Princeton Theological Seminary  
Princeton University  
Purdue University  
Queen's University  
Reed College  
University of Regina  
Rochester Institute of Technology  
University of Rochester  
Royal Roads University  
Rutgers University  
Ryerson University  
University of Saskatchewan  
School of the Art Institute of Chicago  
Siena College  
Simon Fraser University  
Skidmore College  
University of South Carolina  
University of South Florida  
University of Southern California  
St. Lawrence University  
Stony Brook University  
Temple University  
University of Tennessee  
Texas A & M University  
Texas Tech University  
University of Toronto  
University of Texas at Austin  
University of Texas at San Antonio

Trent University  
Tulane University  
U.S. Environmental Protection Agency  
University of Utah  
Valparaiso University  
Vanderbilt University  
Vassar College  
University of Vermont  
University of Victoria  
Virginia Tech  
University of Virginia  
Washington University  
University of Washington  
University of Waterloo  
Wayne State University  
Western Michigan University  
University of Western Ontario  
Wilfred Laurier University  
University of Windsor  
University of Winnipeg  
Winona State University  
University of Wisconsin-Madison  
Wright State University  
Yale University

#### Global Members

University of Hong Kong



*Xin er tong hua bao* (no. 15) from the Hunter Collection of mass education materials published in China, 1947–54. CRL collections.



### Group Members

Antioch College  
Ashland University  
Athenaeum of Ohio  
Baldwin-Wallace College  
Belmont Technical College  
Bluffton College  
Capital University  
Cedarville College  
Central Ohio Technical College  
Central State University  
Cincinnati Christian University  
Cincinnati State Technical and  
Community College  
Clark State Community College  
Cleveland Clinic  
Cleveland State University  
College of Mount St. Joseph  
College of Wooster  
Columbus College of Art and Design  
Columbus State Community College  
Cuyahoga State Community College  
Defiance College  
Denison University  
Edison State Community College  
University of Findlay  
Franciscan University  
Franklin University  
Heidelberg College  
Hiram College  
Hocking Technical College  
James Rhodes State College  
Jefferson Technical College  
John Carroll University  
Kenyon College  
Lakeland Community College  
Lorain Community College  
Lourdes College  
Malone College  
Marietta College

Marion Technical College  
Medical College of Ohio  
Mercy College  
Mount Carmel College of Nursing  
Mount Union College  
Mount Vernon Nazarene University  
Muskingum College  
Myers University  
North Central Technical College  
Northeastern Ohio University –  
College of Medicine  
Northwest State Community College  
Notre Dame College of Ohio  
Oberlin College  
Ohio Dominican College  
Ohio Northern University  
Ohio Wesleyan University  
Otterbein College  
Owens Community College  
Rio Grande Community College  
Shawnee State University  
Sinclair Community College  
Southern State Community College  
Stark State Community College  
State Library of Ohio  
Terra Technical College  
Tiffin University  
University of Toledo  
Urbana University  
Ursuline College  
Walsh University  
Washington State Community College  
Wilberforce College  
Wilmington College  
Wittenberg College  
Xavier University  
Youngstown State University  
Zane State College

### Affiliate Members

Association of Research Libraries  
(ARL)  
Online Computer Library Center  
(OCLC)  
Research Libraries Group (RLG)

## Cooperative Africana Microform Project (CAMP)

### Members

Afrika-Studiecentrum (Leiden, The Netherlands)  
Bodleian Library of Commonwealth & African Studies at Rhodes House  
Boston University  
University of California, Berkeley  
University of California, Los Angeles  
University of Cambridge, African Studies Center  
University of Chicago  
Columbia University  
Cornell University  
Dartmouth College  
Duke University  
Emory University  
University of Florida  
Georgetown University  
Harry S. Truman Research Institute, Hebrew University  
Harvard University  
University of Illinois at Urbana-Champaign  
Indiana University  
University of Iowa  
University of Kansas  
Library of Congress  
School of Oriental and African Studies, University of London  
Michigan State University  
University of Michigan  
University of Minnesota  
New York Public Library  
New York University  
University of North Carolina  
Northwestern University  
Ohio State University  
Ohio University

University of Pennsylvania  
Princeton University  
Queen's University  
Rutgers University  
Scandinavian Institute of African Studies  
University of Sheffield  
Stanford University  
Syracuse University  
Temple University  
University of Virginia  
University of Wisconsin-Madison  
Yale University

## Collaborative Initiative for French Language Collections (CIFNAL)

### Members

University of Alberta  
Brigham Young University  
Brown University  
University of California, Berkeley  
University of California, Los Angeles  
University of California, San Diego  
University of California, Santa Cruz  
University of Chicago  
University of Colorado, Boulder  
Cornell University  
Duke University  
University of Florida  
Harvard University  
University of Illinois at Urbana-Champaign  
Indiana University  
University of Iowa  
John Carter Brown Library  
Johns Hopkins University  
University of Manitoba  
University of Michigan  
University of Minnesota  
Northwestern University  
University of Pennsylvania  
Stanford University  
University of Utah  
Vanderbilt University  
University of Washington  
University of Wisconsin  
Yale University



## German-North American Resources Partnership (GNARP)

### Members

University of Alberta  
Brigham Young University  
Brown University  
University of California, Berkeley  
University of California, Irvine  
University of California, Los Angeles  
University of California, San Diego  
University of California, Santa Cruz  
University of Chicago  
University of Cincinnati  
University of Colorado, Boulder  
Cornell University  
Dartmouth College  
University of Delaware  
Duke University  
Harvard University  
University of Illinois at Urbana-  
Champaign  
Indiana University  
University of Iowa  
Johns Hopkins University  
Kansas State University  
University of Kentucky  
Library of Congress  
University of Manitoba  
Michigan State University  
University of Michigan  
University of Minnesota  
New York University  
University of North Carolina  
Northwestern University  
University of Notre Dame  
University of Pennsylvania  
Princeton University  
Rice University  
Rutgers University  
Suffolk University

University of Toronto  
University of Utah  
Vanderbilt University  
Washington University  
University of Washington  
University of Waterloo  
University of Wisconsin  
Yale University

### German Partners

Bayerische Staatsbibliothek  
Goethe-Institut, New York  
Humboldt Universität zu Berlin  
Niedersächsische Staats- und  
Universitätsbibliothek Göttingen  
Universitätsbibliothek Tübingen  
Universitäts- und Landesbibliothek  
Sachsen-Anhalt, Halle

## LAMP

### Members

Brigham Young University  
Brown University  
University of California, Berkeley  
University of California, Irvine  
University of California, Los Angeles  
University of California, Riverside  
University of California, San Diego  
University of California, Santa Barbara  
University of California, Santa Cruz  
University of Chicago  
Columbia University  
University of Connecticut  
Cornell University  
Duke University  
Emory University  
University of Florida  
Harvard University  
University of Illinois at Urbana-  
Champaign  
Indiana University  
University of Iowa  
University of Kansas  
Library of Congress  
University of Massachusetts-Amherst  
University of Miami  
Michigan State University  
University of Michigan  
University of Minnesota  
University of New Mexico  
New Mexico State University  
New York Public Library  
New York University  
University of North Carolina  
University of Notre Dame  
Ohio State University  
University of Pennsylvania  
University of Pittsburgh  
Princeton University  
Rice University  
Rutgers University  
University of Southern California  
Stanford University  
University of Texas  
University of Toronto  
Tulane University  
Vanderbilt University  
University of Virginia  
University of Wisconsin  
Yale University

The death of Zapata, Mexico's revolutionary hero, is covered in the April 11, 1919 edition of *Excelsior* (Mexico City). From CRL collections.



### Latin Americanist Research Resources Partnership (LARRP)

#### Members

University of Arizona  
Arizona State University  
Biblioteca Inca  
Boston College  
Brigham Young University  
University of California, Berkeley  
University of California, Los Angeles  
University of California, San Diego  
University of California, Santa Barbara  
Centro de Investigaciones Regionales de Mesoamerica  
Columbia University  
University of Connecticut  
Cornell University  
Dartmouth College  
Duke University  
Emory University  
University of Florida  
Florida International University  
Harvard University  
University of Illinois at Urbana-Champaign  
Indiana University  
Inter-American Development Bank  
University of Kansas  
Library of Congress  
University of Massachusetts, Amherst  
University of Miami  
Michigan State University  
University of Michigan  
University of Minnesota  
University of New Mexico  
New York University  
University of North Carolina  
University of Notre Dame

Ohio State University  
Ohio University  
University of Pennsylvania  
University of Pittsburgh  
Princeton University  
Universidad de Puerto Rico, Rio Piedras  
Rice University  
Universidade Federal do Rio Grande do Sul  
Rutgers University  
Universidad de San Andres  
University of South Florida  
University of Southern California  
Syracuse University  
University of Texas  
University of Toronto  
Tulane University  
Vanderbilt University  
University of the West Indies/ St. Augustine  
University of Wisconsin  
Yale University

### Middle East Microform Project (MEMP)

#### Members

University of Arizona  
Brigham Young University  
University of California, Berkeley  
University of California, Los Angeles  
University of California, Santa Barbara  
Columbia University  
Duke University  
Georgetown University  
Harvard University  
University of Illinois at Urbana-Champaign  
Indiana University  
University of Iowa  
Library of Congress  
University of Michigan  
University of Minnesota  
New York Public Library  
New York University  
University of North Carolina  
University of Pennsylvania  
Princeton University  
University of Southern California  
Stanford University  
University of Texas  
University of Washington  
Washington University  
Yale University

## South Asia Microform Project (SAMP)

### Members

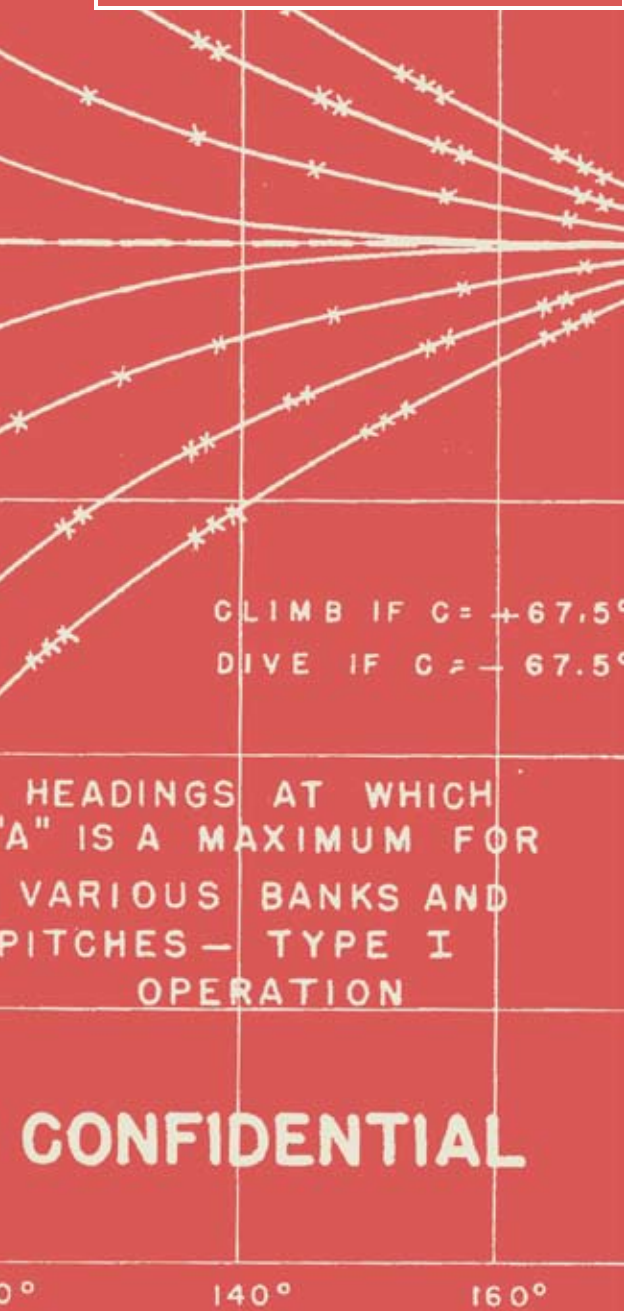
University of British Columbia  
Brown University  
University of California, Berkeley  
University of California, Los Angeles  
University of Chicago  
Columbia University  
Cornell University  
Duke University  
Emory University  
Harvard University  
University of Hawaii  
University of Illinois at Urbana-  
Champaign  
Indiana University  
University of Iowa  
Kansas State University  
Library of Congress  
University of Michigan  
University of Minnesota  
University of Missouri  
New York Public Library  
University of North Carolina  
North Carolina State University  
Ohio State University  
University of Pennsylvania  
Princeton University  
Rutgers University  
Syracuse University  
University of Texas  
University of Toronto  
University of Virginia  
University of Washington  
Washington University  
University of Wisconsin  
Yale University

## Southeast Asia Microform Project (SEAM)

### Members

Arizona State University  
University of California, Berkeley  
University of California, Irvine  
University of California, Los Angeles  
University of California, Riverside  
University of Chicago  
Columbia University  
Cornell University  
Duke University  
Harvard University  
University of Hawaii  
Library of Congress  
University of Michigan  
University of North Carolina  
Northern Illinois University  
Ohio University  
University of Oregon  
Princeton University  
Royal Netherlands Institute of  
Southeast Asian and Caribbean  
Studies (KITLV)  
University of Washington  
University of Wisconsin  
Yale University

Graph from *Analysis of Operation of the Universal Magnetometer Head* by M. S. Richardson and A. C. Weld, OSRD report no. 1776 (Mineola, N.Y.: Airborne Instruments Laboratory, 1943). From CRL collections.



### Slavic and East European Microform Project (SEEMP)

#### Members

University of Arizona  
Arizona State University  
University of California, Berkeley  
University of California, Los Angeles  
University of Chicago  
Columbia University  
Cornell University  
Duke University  
University of Florida  
George Washington University  
Harvard University  
University of Illinois, Urbana-  
Champaign  
Indiana University  
University of Iowa  
University of Kansas  
Library of Congress  
University of Michigan  
University of Minnesota  
New York Public Library  
New York University  
University of North Carolina  
Ohio State University  
University of Pittsburgh  
Princeton University  
Stanford University  
University of Texas  
University of Toronto  
University of Washington  
Yale University

### Technical Report Archive & Image Library (TRAIL)

*Recruitment started May 24, 2010*

#### Members

Baylor University  
University of California, San Diego  
Colorado State University  
Kansas State University  
Purdue University  
Texas Tech University

## REPORT OF INDEPENDENT AUDITORS

To the Board of Directors of  
Center for Research Libraries

We have audited the accompanying statements of financial position of Center for Research Libraries (the Center), as of June 30, 2010 and 2009 and the related statements of activities and of cash flows for the years then ended. These financial statements are the responsibility of the Center's management. Our responsibility is to express an opinion on these financial statements based on our audits.

We conducted our audits in accordance with auditing standards generally accepted in the United States of America. Those standards require that we plan and perform an audit to obtain reasonable assurance about whether the financial statements are free of material misstatement. An audit includes examining, on a test basis, evidence supporting the amounts and disclosures in the financial statements. An audit also includes assessing the accounting principles used and significant estimates made by the Center's management, as well as evaluating the overall financial statement presentation. We believe that our audits provide a reasonable basis for our opinion.

In our opinion, the financial statements referred to above present fairly, in all material respects, the financial position of Center for Research Libraries as of June 30, 2010 and 2009, and the changes in its net assets and cash flows for the years then ended, in conformity with accounting principles generally accepted in the United States of America.

November 16, 2010



**Center for Research Libraries**  
**Statements of Financial Position**

June 30, 2010 and 2009

	<u>2010</u>	<u>2009</u>
<b>Assets</b>		
Cash and cash equivalents	\$ 5,232,773	\$ 4,802,487
Investments	2,635,597	1,608,889
Accounts receivable	108,803	124,999
Grants receivable	141,643	316,755
Prepaid expenses and other	103,070	114,304
Deferred financing costs	127,454	89,476
Property and equipment - net	<u>3,656,442</u>	<u>3,990,057</u>
Total assets	<u>\$ 12,005,782</u>	<u>\$ 11,046,967</u>
<b>Liabilities and Net Assets</b>		
<b>Liabilities</b>		
Accounts payable and accrued expenses	\$ 635,320	\$ 469,194
Deferred revenue	3,611,939	3,591,433
Loan payable	<u>1,444,737</u>	<u>1,539,474</u>
Total liabilities	<u>5,691,996</u>	<u>5,600,101</u>
<b>Net assets</b>		
Unrestricted		
Operating	1,920,600	1,432,918
Area Microform Projects	767,160	621,600
Net investment in property and equipment	<u>2,211,705</u>	<u>2,450,583</u>
Total	4,899,465	4,505,101
Temporarily restricted	<u>1,414,321</u>	<u>941,765</u>
Total net assets	<u>6,313,786</u>	<u>5,446,866</u>
Total liabilities and net assets	<u>\$ 12,005,782</u>	<u>\$ 11,046,967</u>

See accompanying notes to financial statements.

**Center for Research Libraries**  
**Statements of Activities**  
Years Ended June 30, 2010 and 2009

	2010			2009		
	Unrestricted	Temporarily Restricted	Total	Unrestricted	Temporarily Restricted	Total
<b>Revenue and other support</b>						
Membership cost share	\$ 5,374,384	\$ -	\$ 5,374,384	\$ 5,321,939	\$ -	\$ 5,321,939
Area Microform Projects	959,933	-	959,933	799,375	-	799,375
Grants	390,765	821,036	1,211,801	631,375	930,000	1,561,375
Cataloging revenue	40,797	-	40,797	141,045	-	141,045
Newspaper microfilm sales	56,798	-	56,798	163,548	-	163,548
Microform sales	82,294	-	82,294	37,845	-	37,845
Interest income	1,973	-	1,973	63,909	-	63,909
Miscellaneous income	179,328	-	179,328	57,147	-	57,147
Net assets released from restrictions	348,480	(348,480)	-	101,434	(101,434)	-
Total revenue and other support	<u>7,434,752</u>	<u>472,556</u>	<u>7,907,308</u>	<u>7,317,617</u>	<u>828,566</u>	<u>8,146,183</u>
<b>Expenses</b>						
Program	5,163,498	-	5,163,498	5,196,645	-	5,196,645
Management and general	654,556	-	654,556	575,158	-	575,158
Fundraising	79,782	-	79,782	80,594	-	80,594
Total expenses	<u>5,897,836</u>	<u>-</u>	<u>5,897,836</u>	<u>5,852,397</u>	<u>-</u>	<u>5,852,397</u>
Change in net assets before changes related to collection items not capitalized	1,536,916	472,556	2,009,472	1,465,220	828,566	2,293,786
Collection items purchased and not capitalized	<u>1,142,552</u>	<u>-</u>	<u>1,142,552</u>	<u>1,273,726</u>	<u>-</u>	<u>1,273,726</u>
Change in net assets	394,364	472,556	866,920	191,494	828,566	1,020,060
<b>Net assets</b>						
Beginning of year	4,505,101	941,765	5,446,866	4,313,607	113,199	4,426,806
End of year	<u>\$ 4,899,465</u>	<u>\$ 1,414,321</u>	<u>\$ 6,313,786</u>	<u>\$ 4,505,101</u>	<u>\$ 941,765</u>	<u>\$ 5,446,866</u>

**Center for Research Libraries**

**Statements of Cash Flows**

Years Ended June 30, 2010 and 2009

	<u>2010</u>	<u>2009</u>
<b>Cash flows from operating activities</b>		
Member cost share and non-member fees received	\$ 6,734,789	\$ 6,513,442
Grants and contributions received	1,383,377	1,470,523
Interest received	1,973	63,909
Cash paid to suppliers and employees	(5,280,613)	(5,483,825)
Interest paid	<u>(25,926)</u>	<u>(40,861)</u>
Net cash provided by operating activities	<u>2,813,600</u>	<u>2,523,188</u>
<b>Cash flows from investing activities</b>		
Purchase of investments	(1,026,708)	(26,139)
Purchase of collections	(1,142,552)	(1,273,726)
Purchase of property and equipment	<u>(119,317)</u>	<u>(191,839)</u>
Net cash (used in) investing activities	<u>(2,288,577)</u>	<u>(1,491,704)</u>
<b>Cash flows from financing activities</b>		
Repayment of loan	<u>(94,737)</u>	<u>(94,737)</u>
<b>Net change in cash and cash equivalents</b>	<b>430,286</b>	<b>936,747</b>
<b>Cash and cash equivalents</b>		
Beginning of year	<u>4,802,487</u>	<u>3,865,740</u>
End of year	<u>\$ 5,232,773</u>	<u>\$ 4,802,487</u>
<b>Reconciliation of change in net assets to net cash provided by operating activities</b>		
Change in net assets	<u>\$ 866,920</u>	<u>\$ 1,020,060</u>
Adjustments to reconcile change in net assets to net cash provided by operating activities		
Collections purchased	1,142,552	1,273,726
Deferred financing costs paid	(45,023)	-
Depreciation expense	452,932	445,088
Amortization of deferred financing cost	7,045	5,592
Changes in operating assets and liabilities		
Accounts receivable	16,196	18,116
Grants receivable	175,112	(90,852)
Prepaid expenses and other	11,234	(89,134)
Accounts payable and accrued expenses	166,126	(33,835)
Deferred revenue	<u>20,506</u>	<u>(25,573)</u>
	<u>1,946,680</u>	<u>1,503,128</u>
<b>Net cash provided by operating activities</b>	<u>\$ 2,813,600</u>	<u>\$ 2,523,188</u>

See accompanying notes to financial statements.

**CENTER FOR RESEARCH LIBRARIES**

**NOTES TO FINANCIAL STATEMENTS**

JUNE 30, 2010 AND 2009

**NOTE 1. NATURE OF ACTIVITIES**

The Center is a membership consortium of institutions with significant academic and research libraries. The Center's mission is to foster and advance scholarly and scientific research through cost-effective, cooperative programs that provide reliable access through traditional and electronic means to unique and unusual collections of library materials in all appropriate formats, international in scope and comprehensive in disciplines.

A majority of the Center's revenue is derived from membership cost share assessments. Other revenue and support consists of grants and sales of materials reproduced.

The following provides a brief description of the Center's program services:

**Collections Storage and Maintenance** - The Center maintains active and inactive collections consisting of an estimated five million volumes or equivalents in its repository facility. These collections are in paper, microform and electronic media. Activities associated with storage and physical maintenance of the Center's film and paper collections include sorting, shelving, labeling, housing, binding conservation work. Also included are the costs of maintaining, monitoring and improving the portion of the building dedicated to collections storage, including climate control and other functions.

**Acquisitions** - This program consists of activities supporting the acquisition and processing of collection materials, including surveying of members on collection needs, selection and subscription costs, ordering, transporting and receiving materials.

**Conversion of Materials** - The Center preserves unique and at-risk cultural and historical materials through microfilming and digital conversion. Materials are organized, analyzed, collated and shipped to and from service providers by the Center and partner organizations. Film and digital copies are produced and distributed.

**Service and Delivery** - The Center delivers an estimated 33 million pages of collection materials to member institutions and other clients each year. Activities include receiving and processing requests for the Center's collection materials from member libraries and clients, retrieval and preparation of materials for delivery, shipping, fulfillment of electronic document delivery requests, receipt and re-shelving of returned materials and fulfillment and processing of member purchase requests for individual items.

**NOTE 1. NATURE OF ACTIVITIES (CONTINUED)**

**Cataloging and Metadata** - This program involves production and processing of preliminary and final catalog records, finding aids for the Center's collection materials and metadata for electronic resources including those produced and/or acquired by the Center.

**Area Microform Projects (AMPS)** - This program involves specific support for the Area Microform Projects and other self-funded area studies projects undertaken by the Center for partner organizations. Activities include identification and procurement of materials for preservation, microfilming and digitization as well as conversion and cataloging of those materials.

**Grants** - The Center receives grants to fund preservation, cataloging, union lists, acquisitions and other activities, either independently or as a partner in cooperative projects. These grants are normally from private philanthropies or from the U.S. federal government.

**NOTE 2. SUMMARY OF SIGNIFICANT ACCOUNTING POLICIES**

**Basis of Accounting** - The Center's financial statements are prepared on the accrual basis of accounting in accordance with generally accepted accounting principles.

**Financial Statement Presentation** - In order to conform to provisions of generally accepted accounting principles, the Center, as a not-for-profit entity, is required to report information regarding its financial position and activities in three classes of net assets: unrestricted net assets, temporarily restricted net assets, and permanently restricted net assets. Net assets are generally reported as unrestricted unless assets are received from donors with explicit stipulations that limit the use of the asset. The Center has determined that no net assets are permanently restricted as of June 30, 2010 and 2009.

**New Accounting Pronouncement** - During 2009, the Financial Accounting Standards Board (FASB) established the FASB Accounting Standards Codification as the official source of authoritative generally accepted accounting principles (GAAP) for all non-governmental entities. The Codification, which changes the referencing of financial standards, supersedes current authoritative guidance and is effective for financial periods ending after September 15, 2009. The Codification is not intended to alter existing GAAP and it is not expected to result in a change in accounting practice for the Center.

**Cash and Cash Equivalents** - Short-term investments are considered to be investments.

**NOTE 2. SUMMARY OF SIGNIFICANT ACCOUNTING POLICIES (CONTINUED)**

**Investments** - The investments of the Center are reported at fair value. The fair value of a financial instrument is the amount that would be received to sell that asset (or paid to transfer a liability) in an orderly transaction between market participants at the measurement date (the exit price). Purchases and sales of the investments are reflected on a trade-date basis. Interest income is recorded on the accrual basis.

**Accounts and Grants Receivable** - Accounts and grants receivable are stated at the amounts that the Center expects to collect from outstanding balances. Bad debts, which are typically minimal, are written off as incurred.

**Deferred Financing Costs** - The costs incurred in obtaining the Center's loan have been deferred and are being amortized over the life of the loan. During the current year the costs incurred to be released from the line of credit stipulation have been deferred and are being amortized over the remaining life of the loan.

**Property and Equipment** - Property and equipment with a cost in excess of \$1,000 and a useful life greater than one year are recorded at cost and depreciated using the straight-line method over the estimated useful lives of the assets. Estimated lives range from three to ten years for furniture and equipment and thirty years for building and improvements. Upon sale or retirement, the cost and related accumulated depreciation are eliminated from the respective accounts and the resulting gain or loss is included in the statements of activities. Property and equipment are reviewed for impairment when events or changes in circumstances indicate that the carrying amount of the assets may not be recoverable. There were no impairment charges for the years ended June 30, 2010 or June 30, 2009.

**Collections** - The Center has an extensive collection of library materials, which is held for research purposes. The materials were acquired through purchases and contributions since the Center's inception. The Center has adopted a policy of not capitalizing collection expenditures in its financial statements.

Purchases of collection items are recorded as decreases in unrestricted net assets in the year in which the items are acquired and a release of temporarily restricted net assets if acquired with such funds. Contributed collection items are not reflected in the financial statements. Proceeds from disposals or insurance recoveries are reflected as increases in the appropriate net asset class.

The collections are subject to a policy that requires proceeds from their sales to be used to acquire other collection items. No collection items were disposed of through sales during the year ended June 30, 2010 and 2009.

**NOTE 2. SUMMARY OF SIGNIFICANT ACCOUNTING POLICIES (CONTINUED)**

**Contributions** - Contributions received are recorded as unrestricted or temporarily restricted support, depending on the existence and nature of any donor-imposed restrictions on the use of the funds. Contributions reported as temporarily restricted support are released to unrestricted net assets when the donor restriction expires, that is, when a stipulated time restriction ends or a purpose restriction is accomplished, and are reported in the statements of activities as net assets released from restrictions.

**Revenue Recognition** - Membership cost share assessments are recognized as revenue during the membership year. Dues received in advance of the membership year are accounted for as deferred revenue at year end. Revenue from cost reimbursement type grants is recognized as grant related costs are incurred. Grant funds received in advance are accounted for as deferred revenue. AMPS funds received for projects during the year are recognized as unrestricted revenue. Those AMPS funds received in advance of the project year are accounted for as deferred revenue.

**Allocation of Expenses** - The costs of providing the Center's various programs and supporting services have been summarized on a functional basis in the statements of activities. Accordingly, certain costs have been allocated among the programs and supporting services on the basis of management estimates of direct salary expenses, physical space occupied and programs benefited.

**Income Taxes** - The Center is exempt from federal income taxes under Section 501(c)(3) of the Internal Revenue Code. Accordingly, there is no provision for income taxes recorded in the accompanying financial statements.

The Center files Form 990, *Return of Organization Exempt from Income Tax*. The Center's returns are subject to examination by the Internal Revenue Service until the applicable statute of limitations expires

**Management Estimates and Assumptions** - The preparation of financial statements in conformity with accounting principles generally accepted in the United States requires management to make estimates and assumptions that affect the amounts reported in the financial statements and accompanying notes. Actual results could differ from those estimates.

**Subsequent Events** - Subsequent events have been evaluated through November 16, 2010, which is the date the financial statements were available to be issued.

**NOTE 3. INVESTMENTS**

The composition of investments at June 30, 2010 and 2009 is as follows:

	2010	2009
Money market funds	\$ 1,635,597	\$ 1,608,889
Certificates of deposits	1,000,000	-
	<u>\$ 2,635,597</u>	<u>\$ 1,608,889</u>

**NOTE 4. FAIR VALUE MEASUREMENTS**

The *Fair Value Measurements and Disclosures* Topic of the FASB Accounting Standards Codification established a fair value hierarchy that prioritizes the inputs to valuation techniques used to measure fair value. The hierarchy gives the highest priority to unadjusted quoted prices in active markets for identical assets or liabilities (Level 1 measurements) and the lowest priority to unobservable inputs (Level 3 measurements). The three levels of the fair value hierarchy are described below:

**Basis of Fair Value Measurement**

- Level 1 Unadjusted quoted prices in active markets that are accessible at the measurement date for identical, unrestricted assets or liabilities
- Level 2 Quoted prices in markets that are not considered to be active or financial instruments for which all significant inputs are observable, either directly or indirectly
- Level 3 Prices or valuations that require inputs that are both significant to the fair value measurement and unobservable

The methods used to measure fair value may produce an amount that may not be indicative of net realizable value or reflective of future fair values. Furthermore, although the Center believes its valuation methods are appropriate and consistent with other market participants, the use of different methodologies or assumptions to determine the fair value of certain financial instruments could result in a different fair value measurement at the reporting date.



**NOTE 4. FAIR VALUE MEASUREMENTS (CONTINUED)**

The following tables set forth, by level within the fair value hierarchy, the Center's investment assets at fair value as of June 30, 2010 and 2009. As required, assets and liabilities are classified in their entirety based on the lowest level of input that is significant to the fair value measurement. The Center had no investment assets at fair value classified within Level 3 at June 30, 2010 and 2009.

		Fair Value Measurements at 06/30/10 Using		
		Quoted Prices in Active Markets for Identical Assets (Level 1)	Significant Other Observable Inputs (Level 2)	Significant Unobservable Inputs (Level 3)
		Total		
Certificate of deposits	\$ 1,000,000	\$ -	\$ 1,000,000	\$ -
Money market funds	1,635,597	-	1,635,597	-
	<u>\$ 2,635,597</u>	<u>\$ -</u>	<u>\$ 2,635,597</u>	<u>\$ -</u>

		Fair Value Measurements at 06/30/09 Using		
		Quoted Prices in Active Markets for Identical Assets (Level 1)	Significant Other Observable Inputs (Level 2)	Significant Unobservable Inputs (Level 3)
		Total		
Money market fund	\$ 1,608,889	\$ -	\$ 1,608,889	\$ -

The money market funds and certificates of deposit are valued at cost which approximates their fair value. Certain 2009 amounts were reclassified to conform to the current year presentation.

**NOTE 5. PREPAID EXPENSES AND OTHER**

Prepaid expenses and other consist of the following as of June 30, 2010 and 2009:

	<u>2010</u>	<u>2009</u>
Prepaid - insurance	\$ -	\$ 78,535
Prepaid - other	<u>103,070</u>	<u>35,769</u>
Total prepaid expenses	<u>\$ 103,070</u>	<u>\$ 114,304</u>

In the course of cataloging its dissertations collection, the Center incurs usage fees to access the Online Computer Library Center (OCLC) database. The Center is able to offset these fees from credits received from OCLC for their use of the Center. The Center has no earned cumulative net credits as of June 30, 2010 and 2009, respectively.

**NOTE 6. PROPERTY AND EQUIPMENT**

Property and equipment consisted of the following as of June 30, 2010 and 2009:

	<u>2010</u>	<u>2009</u>
Land	\$ 128,446	\$ 128,446
Building and improvements	10,474,756	10,448,880
Furniture and equipment	<u>1,931,691</u>	<u>1,838,251</u>
	12,534,893	12,415,577
Less accumulated depreciation	<u>(8,878,451)</u>	<u>(8,425,520)</u>
	<u>\$ 3,656,442</u>	<u>\$ 3,990,057</u>

Depreciation expense was \$452,932 for the year ended June 30, 2010 and \$445,088 for 2009.

**NOTE 7. ACCOUNTS PAYABLE AND ACCRUED EXPENSES**

Accounts payable and accrued expenses consisted of the following as of June 30, 2010 and 2009:

	<u>2010</u>	<u>2009</u>
Accounts payable	\$ 226,338	\$ 80,464
Accrued vacation	196,938	192,451
Accrued salaries and withholdings	147,856	132,371
Other accrued expenses	<u>64,188</u>	<u>63,908</u>
	<u>\$ 635,320</u>	<u>\$ 469,194</u>

**NOTE 8. DEFERRED REVENUE**

The Center regularly bills in advance of the upcoming fiscal year for membership cost share assessments and AMPS membership. Those membership payments that are received for future fiscal years are held as deferred revenue to be recognized in the fiscal year for which they will be earned. Occasionally, grant payments made in advance of a future fiscal year are held as deferred revenue. As of June 30, 2010 and 2009, deferred revenue was as follows:

	<u>2010</u>	<u>2009</u>
Deferred membership cost share	\$ 3,523,248	\$ 3,533,103
AMPS deferred revenue	69,991	45,005
Grants deferred	<u>18,700</u>	<u>13,325</u>
	<u>\$ 3,611,939</u>	<u>\$ 3,591,433</u>

**NOTE 9. LOAN PAYABLE**

In 2001, the Center obtained a \$2,400,000 loan under the Illinois Educational Facilities Authority's Cultural Pooled Financing Program. The loan was collateralized by a bank standby letter of credit pursuant to a reimbursement agreement. To secure its obligations under the reimbursement agreement, the Center provided a mortgage and security agreement to the bank mortgaging its real property and granting a security interest in its personal property. During 2010, the Center was released from the reimbursement agreement and no longer carries the letter of credit.

The loan is repayable in monthly installments of \$7,895, plus interest at a variable rate based on the underlying municipal bond which is reset on a weekly basis. The interest rate was 2.64% and 2.11% at June 30, 2010 and 2009, respectively. The loan matures in 2025. Interest expense for the year ended June 30, 2010 and 2009 was \$25,926 and \$40,861 respectively.

Principal payments are as follows:

Year ending June 30,	
2011	\$ 94,736
2012	94,736
2013	94,736
2014	94,736
2015	94,736
Thereafter	<u>971,057</u>
	<u>\$ 1,444,737</u>

**NOTE 10. TEMPORARILY RESTRICTED NET ASSETS**

Temporarily restricted net assets arise from grants received from various organizations to support cataloging, microform projects, digitization, digital preservation activities and the purchase of equipment to automate library materials. Net assets were released from donor restrictions by incurring expenses of \$348,480 and \$101,434 in 2010 and 2009, respectively. Grant contributions received that are not expended for their restricted purposes are refundable to the grantor. Temporarily restricted net assets at June 30, 2010 and 2009 are available for the following purposes:

	<u>2010</u>	<u>2009</u>
Endangered archives program	\$ 45,720	\$ -
South Asia survey	6,316	-
Vietnam microforming	-	10,745
Membership benefits	4,878	12,046
Global resources network planning	1,129,049	755,117
Middle East research journals	1,911	1,911
Electronic evidence project	173,578	108,047
Government documentation digitization project	52,869	53,899
Total	<u>\$ 1,414,321</u>	<u>\$ 941,765</u>

**NOTE 11. PENSION PLAN**

The Center has established and made available to its employees a defined contribution, money purchase pension plan. Under this plan, funds contributed by the Center and participating employees are used to purchase retirement annuity and death benefit policies for the participants through the Teachers Insurance and Annuity Association and/or the College Retirement Equities Fund. Contributions made by the Center are based on participants' compensation. The Center's contribution for years ended 2010 and 2009 was \$221,483 and \$214,969 respectively.

**NOTE 12. RELATED PARTY TRANSACTIONS**

The Center earns cataloging revenues from OCLC Online Computer Library Center, Inc. (OCLC) and also purchases cataloging and other services from OCLC. Cataloging revenues were \$40,797 and \$141,045 during years ended June 30, 2010 and 2009, respectively. Total services purchased from OCLC were approximately \$43,381 and \$178,579 for the years ended June 30, 2010 and 2009, respectively.

The Center also routinely provides membership services to educational institutions which happen to employ members of the Board of Directors.

**NOTE 13. CONCENTRATION OF CREDIT RISK**

The Center maintains its cash balances in financial institutions deemed to be creditworthy. Balances are insured by FDIC up to \$250,000. Balances may at times exceed insured limits. However, the balances are swept nightly into a money market account that is secured by U.S. Government bonds. The Center believes its credit risk to be minimal.

**SUPPLEMENTARY INFORMATION**

**Center for Research Libraries**  
**Schedule of Functional Expenses and Collection Expenditures**

Year Ended June 30, 2010

	Collections Storage and Maintenance	Acquisitions	Conversion of Materials	Service and Delivery	Cataloging and Metadata	Area Microform Projects	Grants	Total Program	Management and General	Fundraising	Total
<b>Support services</b>											
Cataloging fees	\$ -	\$ -	\$ -	\$ -	\$ 43,381	\$ -	\$ -	\$ 43,381	\$ -	\$ -	\$ 43,381
Innovative	2,319	48,713	-	-	-	-	-	51,032	-	-	51,032
Microform costs	15,638	19,903	49,757	56,865	-	342,758	-	484,921	-	-	484,921
Other support	4,543	10,600	-	15,143	-	-	33,704	63,990	-	-	63,990
Total	22,500	79,216	49,757	72,008	43,381	342,758	33,704	643,324	-	-	643,324
<b>Personnel and operations</b>											
Board and council expense	-	-	-	-	-	-	-	-	23,699	-	23,699
Business expense	185	546	406	725	550	152,512	1,711	156,635	30,154	615	187,404
Consumable supplies	6,898	20,918	4,664	8,894	3,022	-	11,578	55,974	7,461	152	63,587
Insurance	3,772	12,152	7,525	9,009	14,512	-	-	46,970	10,864	-	57,834
Member relations	-	-	-	-	-	-	1,540	1,540	7,822	-	9,362
Memberships	1,240	24,556	73	44	204	-	-	26,117	14,723	-	40,840
Other outside support	2,935	9,023	5,373	6,570	9,781	34,828	139,835	208,345	63,318	-	271,663
Personnel	202,804	563,128	381,519	468,095	731,836	48,369	473,288	2,869,039	446,495	78,793	3,394,327
Postage and delivery	29,060	64,919	26,420	40,463	12,855	-	-	173,717	8,977	183	182,877
Printing	-	-	-	-	-	-	59	59	4,314	-	4,373
Special events	-	-	-	-	-	-	145	145	2,166	-	2,311
Telecommunications	3,843	9,928	3,566	5,939	1,949	-	4,122	29,347	1,932	39	31,318
Travel	663	13,919	-	-	108	12,945	25,445	53,080	8,336	-	61,416
Indirect expenses	-	-	-	-	-	-	20,506	20,506	(20,506)	-	-
Total	251,400	719,089	429,546	539,739	774,817	248,654	678,229	3,641,474	609,755	79,782	4,331,011
<b>Plant and other</b>											
Equipment leases	581	1,306	528	813	258	-	351	3,837	180	-	4,017
Service contracts	14,993	33,697	13,619	20,973	6,662	-	9,567	99,511	4,638	-	104,149
Repairs	4,082	9,173	3,708	5,710	1,814	-	-	24,487	1,263	-	25,750
Utilities	49,256	110,704	44,742	68,902	21,886	-	-	295,490	15,237	-	310,727
Total	68,912	154,880	62,597	96,398	30,620	-	9,918	423,325	21,318	-	444,643
Total operating expenses	342,812	953,185	541,900	708,145	848,818	591,412	721,851	4,708,123	631,073	79,782	5,418,978
Interest expense (including letter-of-credit fees totaling \$4,565)	4,110	9,237	3,733	5,749	1,826	-	-	24,655	1,271	-	25,926
Depreciation	71,798	161,367	65,218	100,435	31,902	-	-	430,720	22,212	-	452,932
Total expenses before collections	418,720	1,123,789	610,851	814,329	882,546	591,412	721,851	5,163,498	654,556	79,782	5,897,836
<b>Collection expenditures - not capitalized</b>											
Materials	-	886,090	-	-	-	222,961	9,200	1,118,251	-	-	1,118,251
Preservation	-	21,681	-	-	-	-	-	21,681	-	-	21,681
Reference works	-	2,453	-	-	-	-	167	2,620	-	-	2,620
Total	-	910,224	-	-	-	222,961	9,367	1,142,552	-	-	1,142,552
<b>Totals</b>	<b>\$ 418,720</b>	<b>\$ 2,034,013</b>	<b>\$ 610,851</b>	<b>\$ 814,329</b>	<b>\$ 882,546</b>	<b>\$ 814,373</b>	<b>\$ 731,218</b>	<b>\$ 6,306,050</b>	<b>\$ 654,556</b>	<b>\$ 79,782</b>	<b>\$ 7,040,388</b>

**Center for Research Libraries**  
**Schedule of Program Revenue and Expenses - Grants**  
Year Ended June 30, 2010

	Temporarily Restricted Contribution Grants							Total Temporarily Restricted
	<u>CSAL</u> South Asian Union Catalog	<u>H. Luce</u> <u>Foundation</u> Vietnam Microforming	<u>Notre</u> <u>Dame</u> Membership Benefits	<u>Mellon</u> <u>Foundation</u> GRN Planning	<u>CAORC</u> Middle East Research Journals	<u>MacArthur</u> <u>Foundation</u> Electronic Evidence Project	<u>University</u> <u>of Arizona</u> Govt Docs Digitization Project	
<b>Revenue</b>								
Foundations and other	\$ 52,036	\$ -	\$ -	\$ 651,000	\$ -	\$ 118,000	\$ -	\$ 821,036
<b>Expenses</b>								
Employee benefits	-	-	-	271	-	31	-	302
FICA	-	-	-	8,095	-	2,605	-	10,700
General serials	-	-	-	9,200	-	-	-	9,200
Medical insurance	-	-	-	7,557	-	-	-	7,557
Member relations expense	-	-	-	1,540	-	-	-	1,540
Office supplies	-	10,745	-	216	-	463	-	11,424
Other business expense	-	-	400	350	-	46	-	796
Other library support	-	-	-	1,255	-	-	-	1,255
Outside professional services	-	-	6,768	103,268	-	575	-	110,611
Retirement	-	-	-	13,572	-	-	-	13,572
Salaries	-	-	-	112,798	-	36,773	-	149,571
SA salaries	-	-	-	1,455	-	-	-	1,455
Service contracts	-	-	-	6,567	-	3,000	-	9,567
Special events	-	-	-	145	-	-	-	145
Staff development	-	-	-	750	-	-	-	750
Telecommunications	-	-	-	3,940	-	-	-	3,940
Travel	-	-	-	-	-	8,686	1,030	9,716
Workmen's compensation	-	-	-	765	-	290	-	1,055
Total expenses	<u>-</u>	<u>10,745</u>	<u>7,168</u>	<u>271,744</u>	<u>-</u>	<u>52,469</u>	<u>1,030</u>	<u>343,156</u>
<b>Change in net assets</b>	52,036	(10,745)	(7,168)	379,256	-	65,531	(1,030)	477,880
<b>Net assets</b>								
Beginning of year	-	10,745	12,046	755,117	1,911	108,047	53,899	941,765
Released for capitalized equipment	<u>-</u>	<u>-</u>	<u>-</u>	<u>5,324</u>	<u>-</u>	<u>-</u>	<u>-</u>	<u>5,324</u>
End of year	<u>\$ 52,036</u>	<u>\$ -</u>	<u>\$ 4,878</u>	<u>\$ 1,129,049</u>	<u>\$ 1,911</u>	<u>\$ 173,578</u>	<u>\$ 52,869</u>	<u>\$ 1,414,321</u>



**Center for Research Libraries**  
**Schedule of Program Revenue and Expenses - Grants**  
Year Ended June 30, 2010

	Fee for Service Grants					Total
	<u>CAORC</u> American Overseas Digital Library	<u>University</u> <u>of Chicago</u>  AMISA	<u>Department</u> <u>of Education</u>  TICFIA	<u>Library of</u> <u>Congress</u>  Preserving News	<u>NSF</u> Long Lived Digital Repositories	
<b>Revenue</b>						
Federal grants	\$ -	\$ 10,592	\$ 112,132	\$ -	\$ 166,536	\$ 289,260
Foundations and other	93,886	-	-	7,619	-	101,505
Total revenue	<u>93,886</u>	<u>10,592</u>	<u>112,132</u>	<u>7,619</u>	<u>166,536</u>	<u>390,765</u>
<b>Expenses</b>						
Employee benefits	249	-	103	-	292	644
FICA	5,258	599	3,194	-	7,362	16,413
Medical insurance	5,879	-	1,646	-	8,593	16,118
Office supplies	-	-	154	-	-	154
Other business expense	-	-	-	171	439	610
Other library support	-	-	32,449	-	-	32,449
Outside professional services	-	-	-	7,049	22,175	29,224
Printing	-	-	-	-	59	59
Professional reference works	-	-	-	-	167	167
Retirement	6,611	842	4,490	-	9,754	21,697
SA salaries	7,887	-	-	-	-	7,887
Salaries	66,327	8,452	45,084	-	103,907	223,770
Telecommunications	-	-	-	-	180	180
Travel	-	699	1,822	399	12,809	15,729
Workmen's compensation	579	-	421	-	799	1,799
Indirect expense allocation	-	-	20,506	-	-	20,506
Total expenses	<u>92,790</u>	<u>10,592</u>	<u>109,869</u>	<u>7,619</u>	<u>166,536</u>	<u>387,406</u>
Change in net assets	1,096	-	2,263	-	-	3,359
<b>Net assets</b>						
Beginning of year	-	-	-	-	-	-
Released for capitalized equipment	1,096	-	2,263	-	-	3,359
End of year	<u>\$ -</u>	<u>\$ -</u>	<u>\$ -</u>	<u>\$ -</u>	<u>\$ -</u>	<u>\$ -</u>